



KONICA MINOLTA

# Saving Print Defaults on Mac's

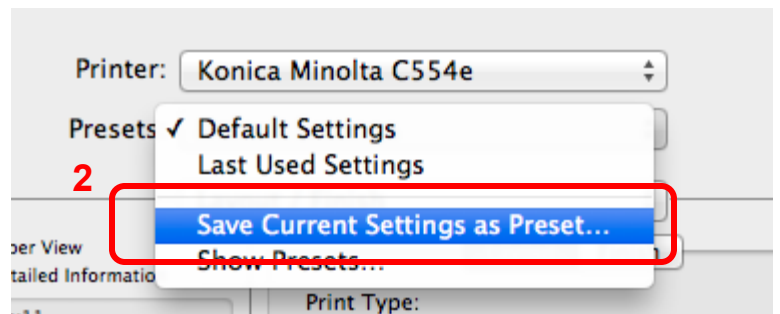
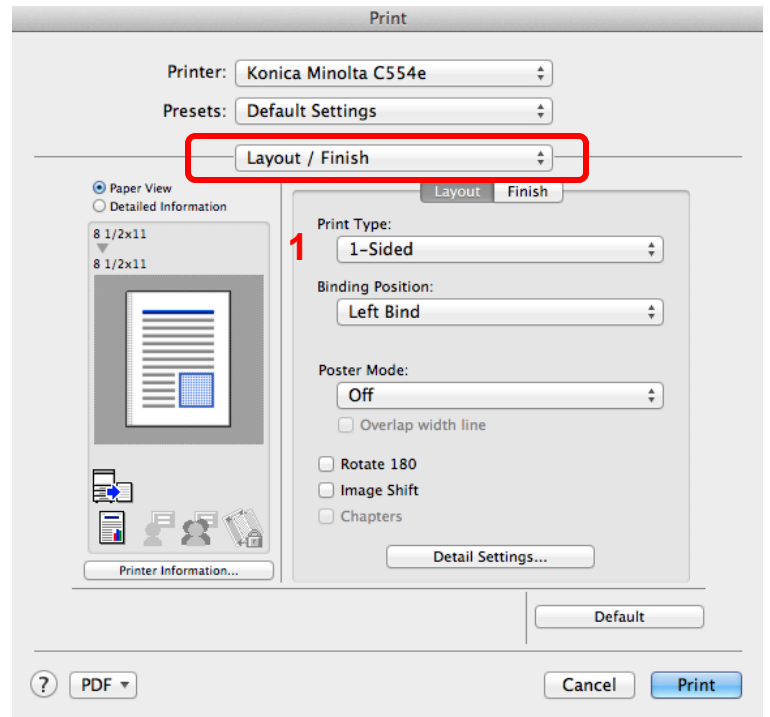
**Make & Models:** Konica Minolta: All models



## What's It Do?

Your Konica Minolta bizhub device's printer driver loads with certain settings on by default, such as Double Siding, and Auto Colour on colour devices. You can change your default settings as desired using the simple steps below.

1. Click File, Print (or ⌘ P) from any software program. Change the print settings to what you wish your defaults to be.
2. Save your settings into a new preset.
3. To save your new preset as the *default* preset, hold down the Command ⌘ (Apple) key on your keyboard and click Print.



## Tips & Tricks

Copyright © 2014 BC1000482 Ltd. DBA Copier How To

- ◆ To double check the preset was saved as your default, close the program you used to save the preset, open a different program, click File, Print, and check that the preset being used is the one you just created.