

KONICA MINOLTA

Make & Models:

What's It Do?

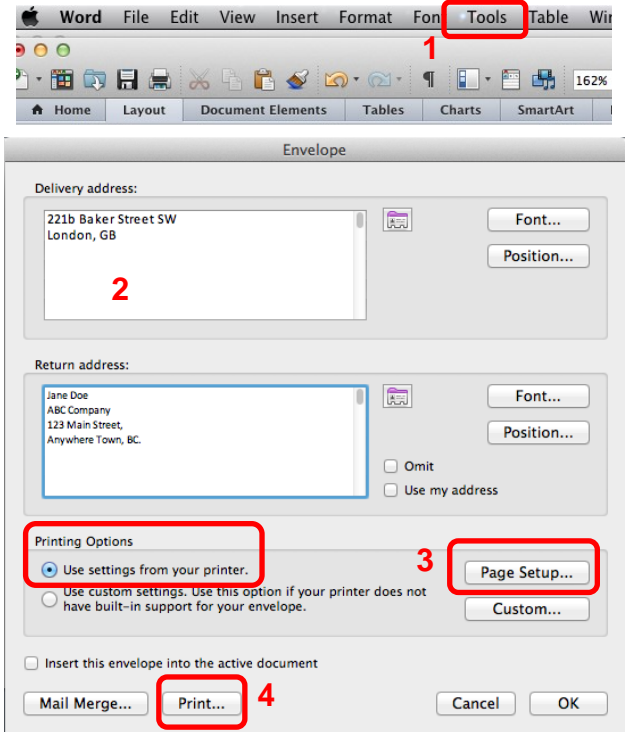
Printing on Envelopes from Mac's

Konica Minolta bizhub: INFO-Palette Series copiers (model numbers ending in 4, 4e, 7, 8, 8e, 9, & large MFP copier/printer i-Series).

Use the steps below to reliably print envelopes of any size on your Konica Minolta bizhub using Word for Mac.

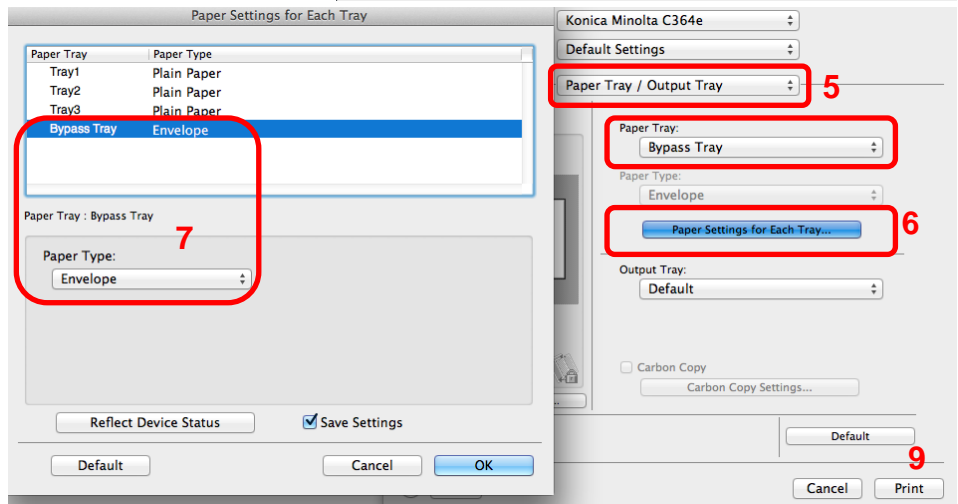
Step 1: Envelope Settings in MSWord for Mac.

- 1) Click on the Tools menu and select Envelopes.
- 2) Set up your delivery & return address, etc. as you want them to appear.
- 3) Click on Page Setup to select your envelope size. If your size is not listed on the menu select Manage Custom Sizes to create a custom paper size (eg. 9"x12" or 10"x13" envelopes). In Printing Options ensure Use settings from your printer is selected.



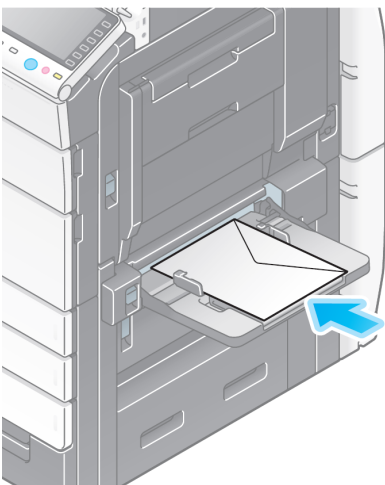
Step 2: Print Settings

- 4) Click on the Print button.
- 5) From the Paper Tray/Output Tray menu select Bypass Tray.
- 6) Click on Paper Settings for Each Tray. (See Tips & Tricks section below if this is grayed out).
- 7) Select the Bypass Tray from the list of trays, and Envelope from the Paper Type pull-down menu. Click OK to return to the print options.
- 8) From the Paper Handling menu ensure the paper size option is your envelope size (should be grayed out).



At the Device

- 10) When prompted, load the envelopes with the print side down, with the flap on top and pointing towards you. (As pictured below).



Tips & Tricks

- ◆ The Bypass Tray will hold up to **10** envelopes at a time.
- ◆ Make sure to run your hands over the envelopes before feeding them to squeeze out as much air as possible.
- ◆ All copiers have limits on the thickness of paper that can feed through and print properly. Envelopes are 3 layers of paper! Thick, craft paper envelopes (like those for invitations and cards) may be too thick to feed through properly. General purpose office envelopes will work best.
- ◆ If you wish to pre-print your logo on window envelopes, make sure to purchase ones designed for copiers and/or laser printers. Most are not, and the plastic window will melt when going through the fuser of your device.
- ◆ ***Note:** On large iSeries multi-function devices, up to **70** envelopes can be run in **Tray 1**. *Refer to the document "Loading Envelopes in Tray 1 on an iSeries" for loading instructions.