

How to add a printer to my laptop instructions

A district employee that wishes to add a printer to their workstation needs to have an internet connection established first at the school.



Note: Instructions for Microsoft Windows 10 version.

Maple Ridge & Pitt Meadows School District 42 IT Department is deploying every computer with an up to date, fully functional set of printers installed.

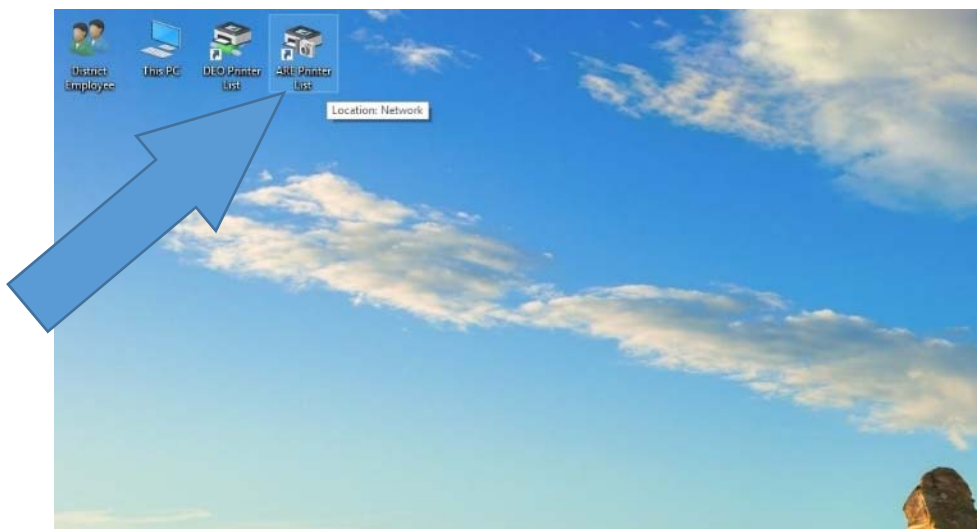
In the event of changing schools or for any reason a new printer needs to be added to the workstation, here are the instructions.

For demonstration purpose, we are using **Alexander Robinson Elementary** as an example.

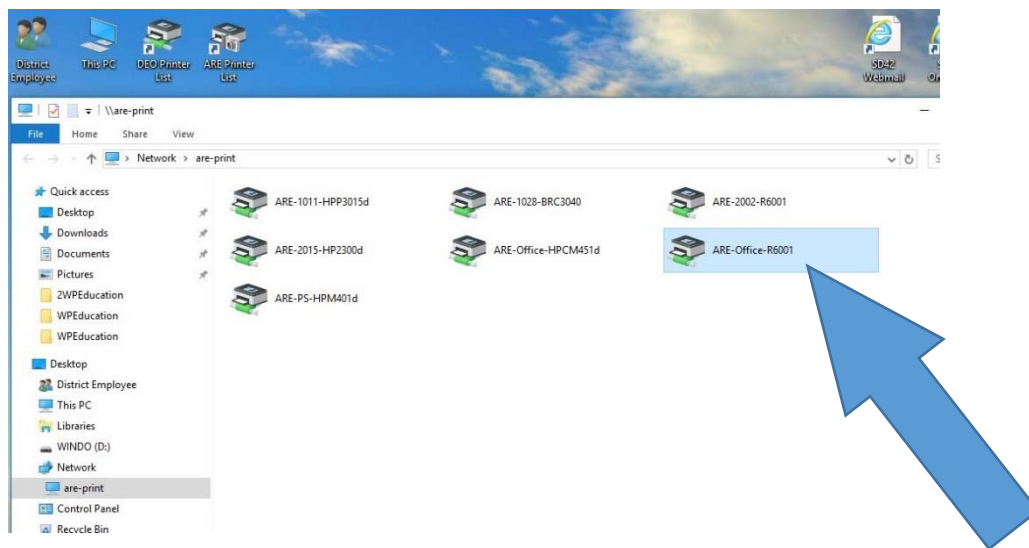
To add the printer to the computer must open Start “**Windows Logo**” button and type the address of the Print Server for your school, for example, please type ‘are-print’ select it from the list and then press ‘Enter’.



Depending on the deployment of the laptop, under your Encrypted personal User account a ‘School Printer list’ shortcut might already be there; Double-click it will have the same results.

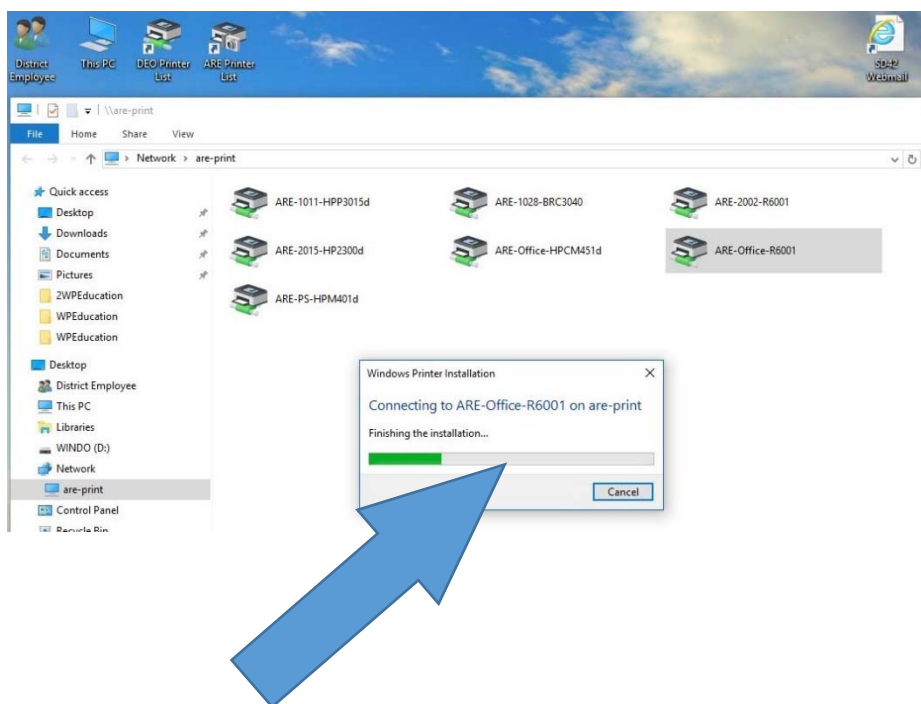


The computer will now attempt to scan for printers on the network and return as results all the valid printer names for the school site.

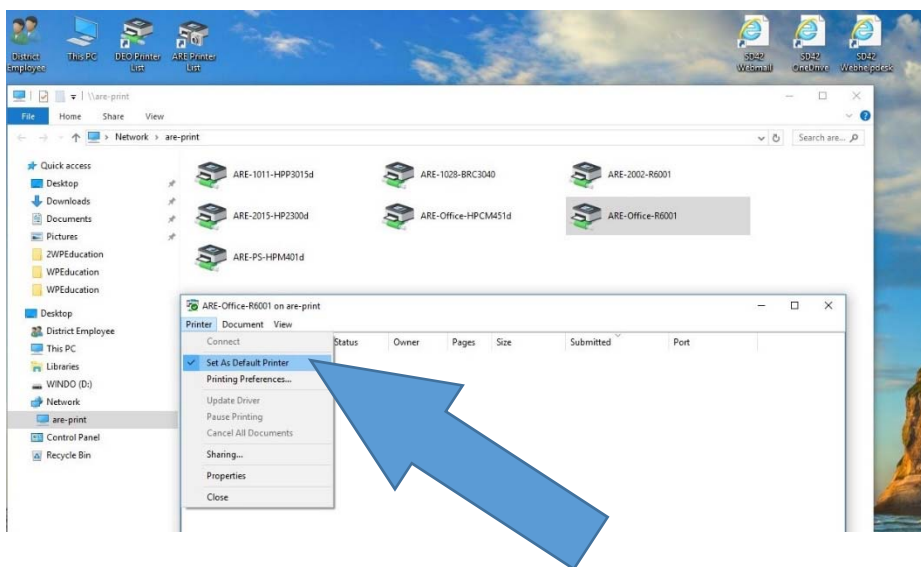


Select the appropriate name of the Printer that you would like to be installed and then double-click it.

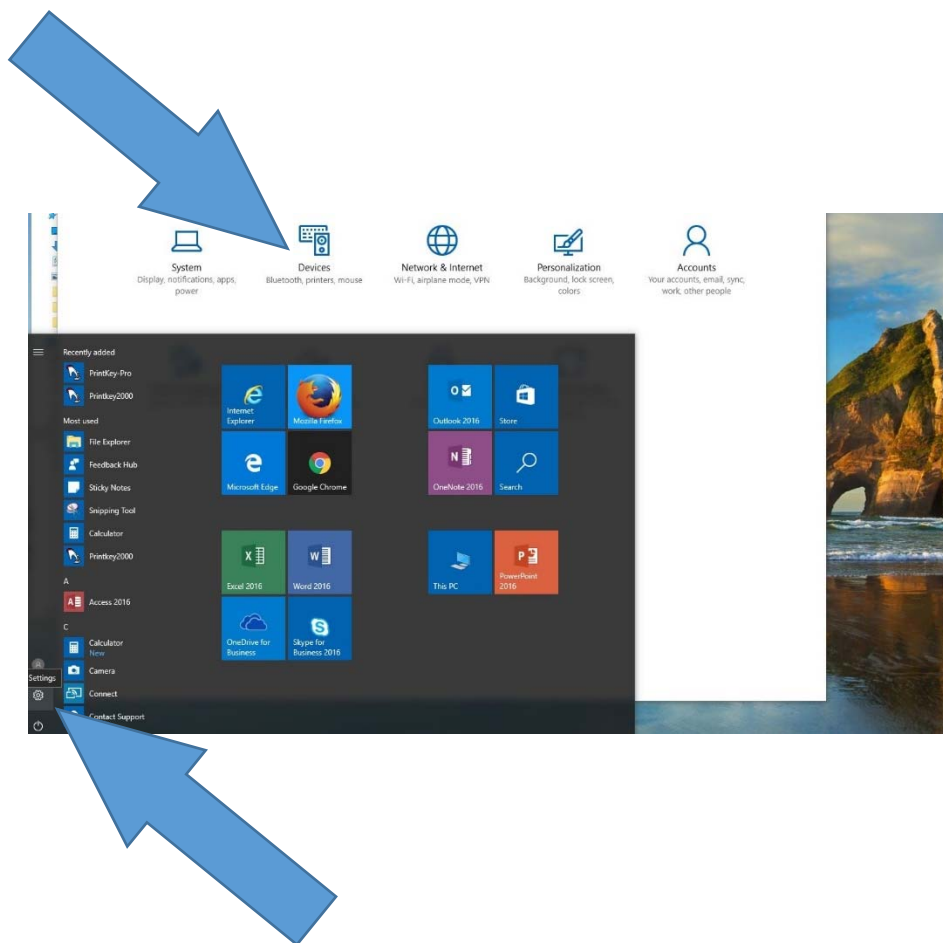
The installation process, downloading the drivers and finishing the set-up will only take few moments.



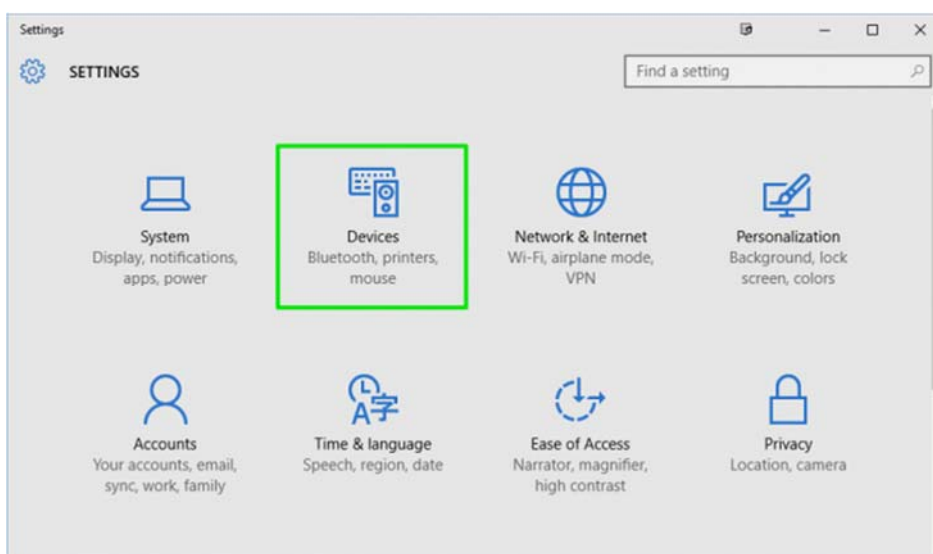
The new Printer is showing up on your system now and you can designate the “Set as Default” option by click on the highlighted field.



Once the process is complete, you can see your new added Printer under the list of Devices



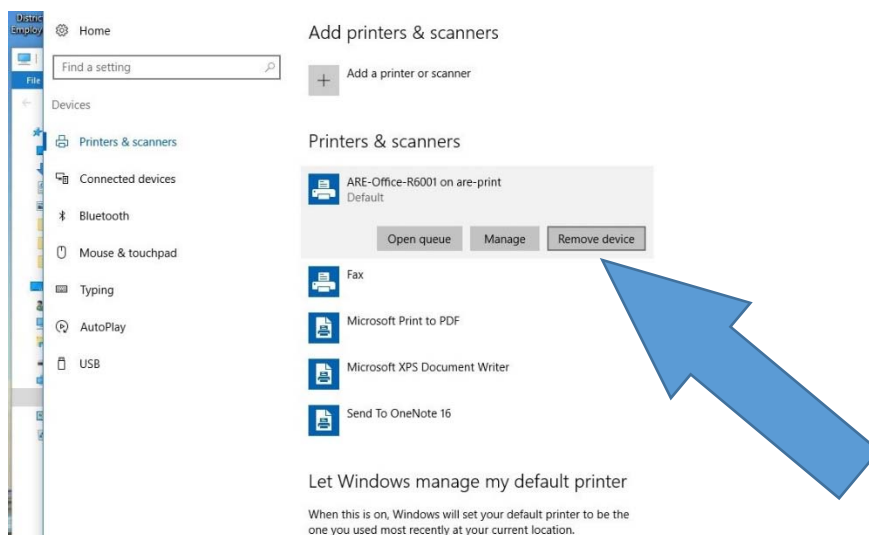
Click Devices, and then “Printers and scanners”



In the circumstances, that a certain printer is no longer needed, this is “How to” remove it.

Open Start, enter “Devices” select it from the list of results, and select your printer.

Then select Remove device at the top of the screen.



Maple Ridge & Pitt Meadows School District 42 list of the Print Server names:

Elementary Schools

| | |
|----------------------------|--------------|
| Albion Elementary | al-print |
| Alexander Robinson | are-print |
| Alouette Elementary | at-print |
| Blue Mountain Elementary | bm-print |
| Connex Alternate Education | connex-print |
| Davie Jones Elementary | dj-print |
| Edith McDermott | eme-print |
| Environmental School | el-print |
| Eric Langton Elementary | el-print |
| Fairview Elementary | fa-print |
| Glenwood Elementary | gl-print |
| Golden Ears Elementary | ge-print |
| Hammond Elementary | ha-print |
| Harry Hooge Elementary | hh-print |
| Highland Park Elementary | hp-print |
| Kanaka Creek Elementary | kce-print |
| Laity View Elementary | lv-print |
| Maple Ridge Elementary | mre-print |
| Pitt Meadows Elementary | pme-print |
| Webster's Corners | al-print |
| Whonnock Elementary | wh-print |
| Yennadon Elementary | yen-print |

Secondary Schools

| | |
|----------------------------|------------|
| Garibaldi Secondary | gss-print |
| Maple Ridge Secondary | mrss-print |
| Pitt Meadows Secondary | pmss-print |
| Samuel Robertson Technical | srt-print |
| Thomas Haney Secondary | thss-print |
| Westview Secondary | wss-print |
| Ridge Meadows College | rsc-print |