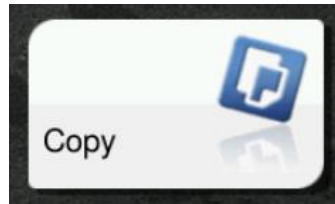




Konica Minolta bizhub iSeries devices Copy / Scan / Print BASICS



Konica Minolta bizhub iSeries devices - COPY



B/W
device

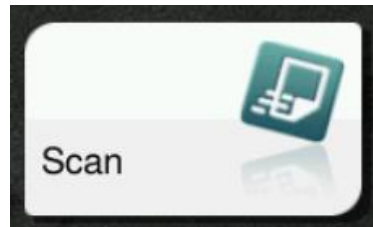


Colour
device



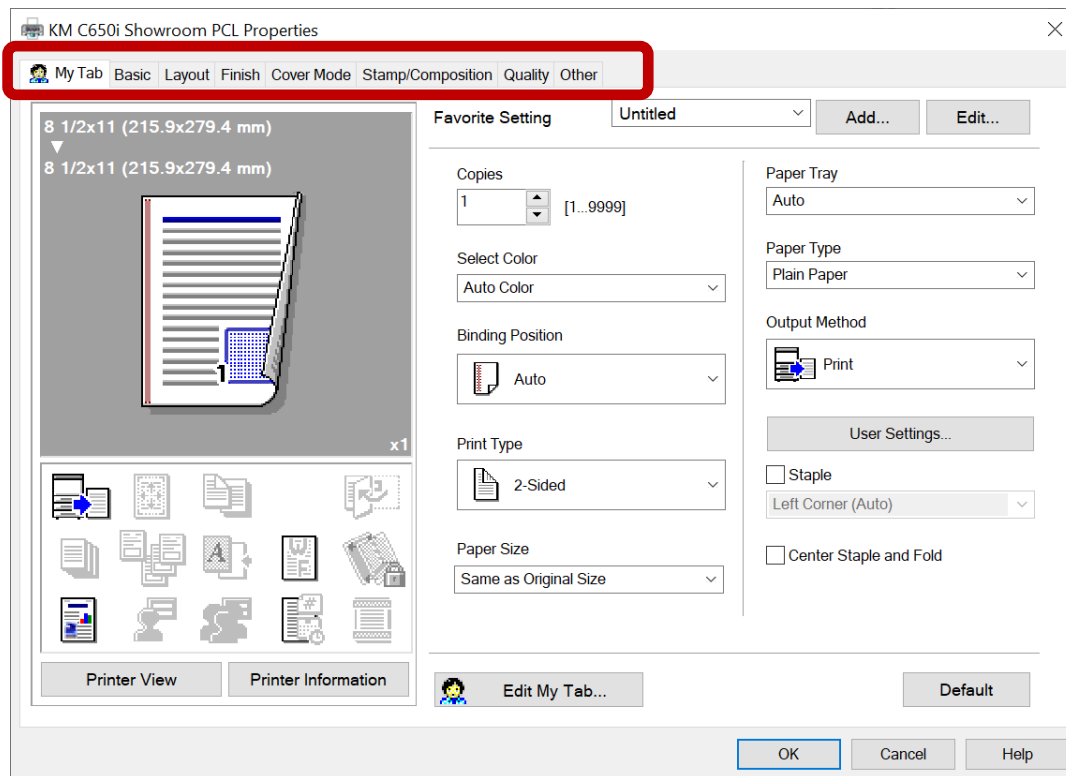
- Select the **Copy** icon on the **Home** screen (or on right-side panel)
- Select the features you wish to change/use
- Select **Original Type**, **Finishing** or **Application** to program additional features
- Select the **No. Of Sets** icon on copy screen (or **10Keypad** icon on the right-side) for quantity
- Press **Start**

Konica Minolta bizhub iSeries devices - SCAN



- Select the **Scan** icon on the **Home** screen (or from the right-side panel)
- Select your scan location from the **Address Book** directory
- Select the features you wish to use on the main screen
- Select **Application** to program additional features
- Press **Start**

Konica Minolta bizhub iSeries – PRINT from PC



- With your file open select **File, Print**
- Select the **Konica Minolta Print Driver**
- Select **Printer Properties** (or Preferences)
- Select your features on the print driver from the various tabs / options
- Select **OK**
- Select **Print**

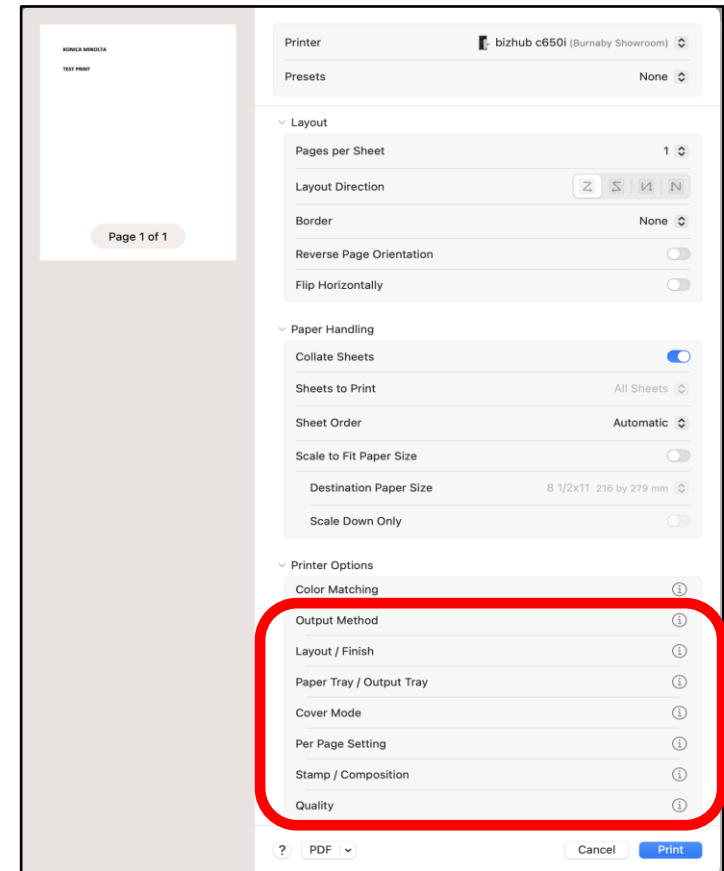
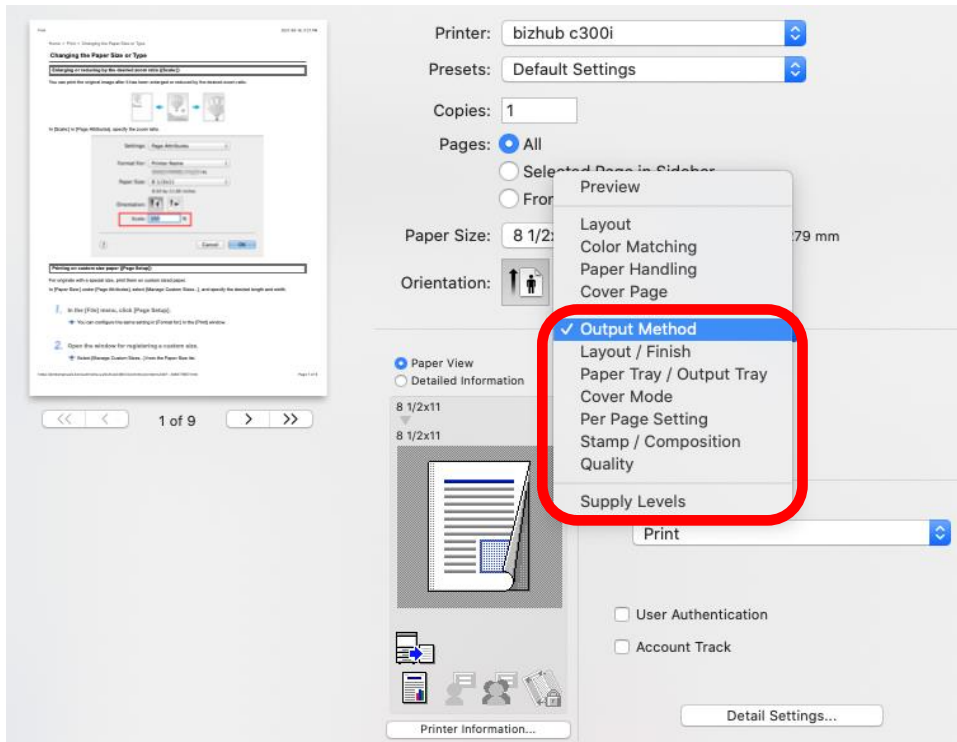
***Note:** *Select Color* is only available on the c750i, c550i, c450i, and c360i.

Konica Minolta bizhub iSeries – PRINT from MAC



Ventura and Sonoma OS

Catalina OS and older



- With your file open select **File**, **Print** and select the **Konica Minolta print driver**
- Select your features from the options available
- Select **Print**
- ***Note: Color** is only available on the c750i, c550i, c450i and c360i.

For more Information and Reference Materials:

- **SD72 intranet site for Konica Minolta reference materials**

For feature / functionality “cheat sheets”, posters, troubleshooting tips, consumables list and miscellaneous information.

<https://www.sd42.ca/helpdesk/file-print-services/>

- Konica Minolta website for **on-line User Guides:**

<https://konicaminolta.ca/en/business/support/user-manuals>

Under Category, select Office Multifunction. Under Product select your device model.

***Note:** On **iSeries** models - search for the features/functionality in the sections **“Using Functions in Classic Style”**.

- **iTraining** – short, snippet videos:

<https://itraining.konicaminolta.eu/en/home.html>

Select Printing Systems, then device model, then language. ***Note:** For features and functionality: for **c360i-c750i** models view **c658** videos. For **360i- 950i** models view **758** videos. ***This will show “classic style” videos.** For jam clearance and replacing consumables, view iSeries model videos.



KONICA MINOLTA