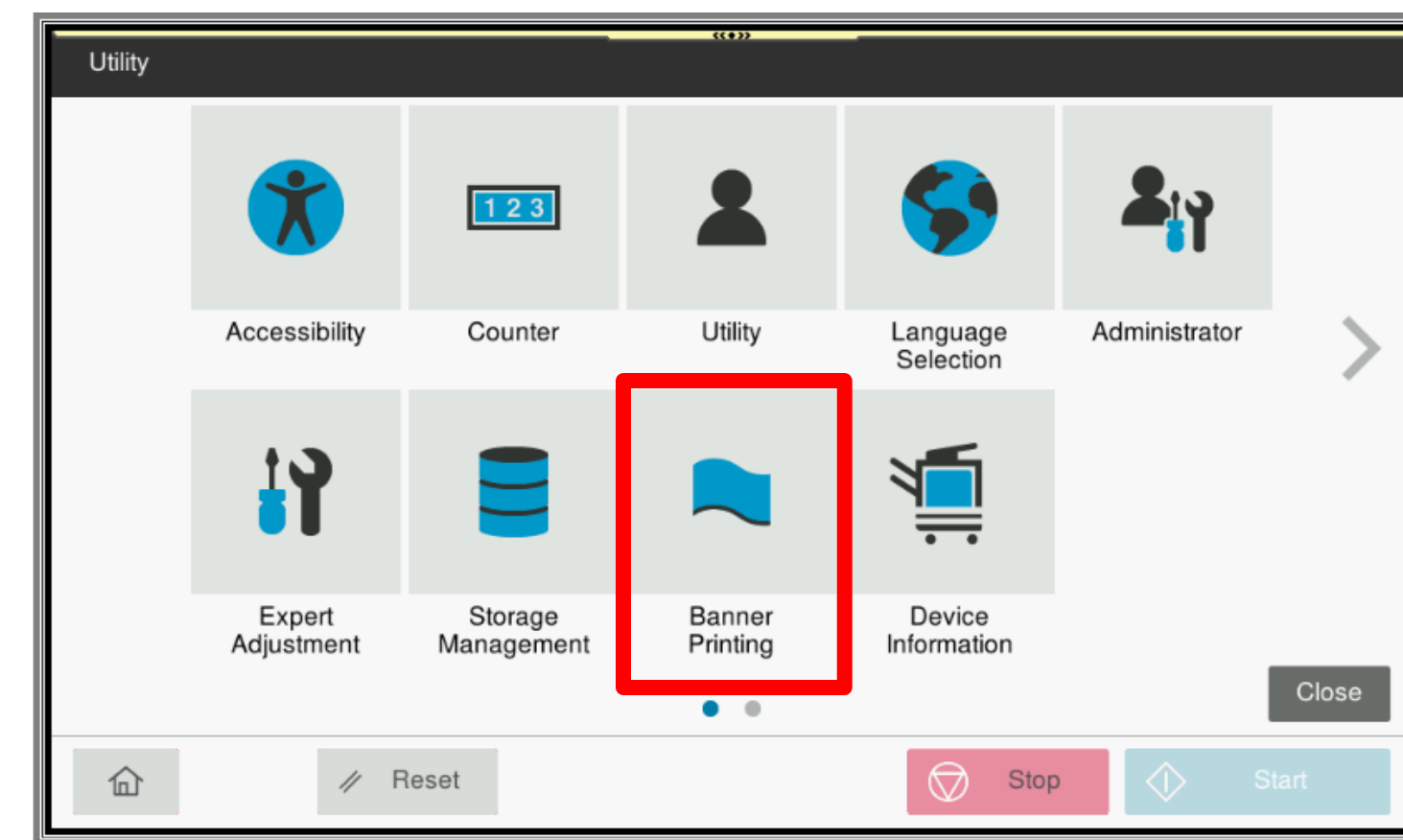
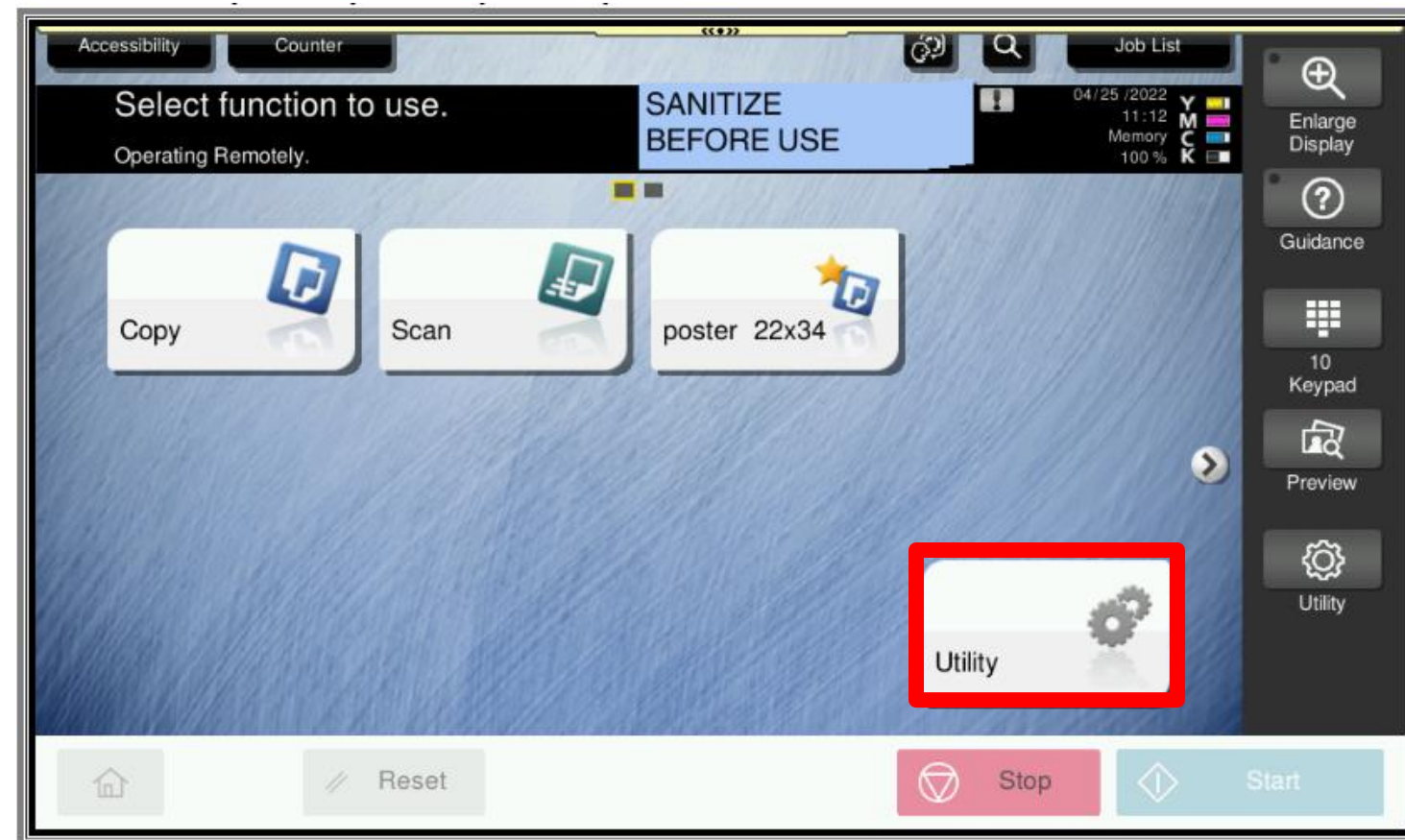


1

When creating a banner, it is critical the banner size created reflects the actual size of the banner paper
Maximum size 47" x 11.5"

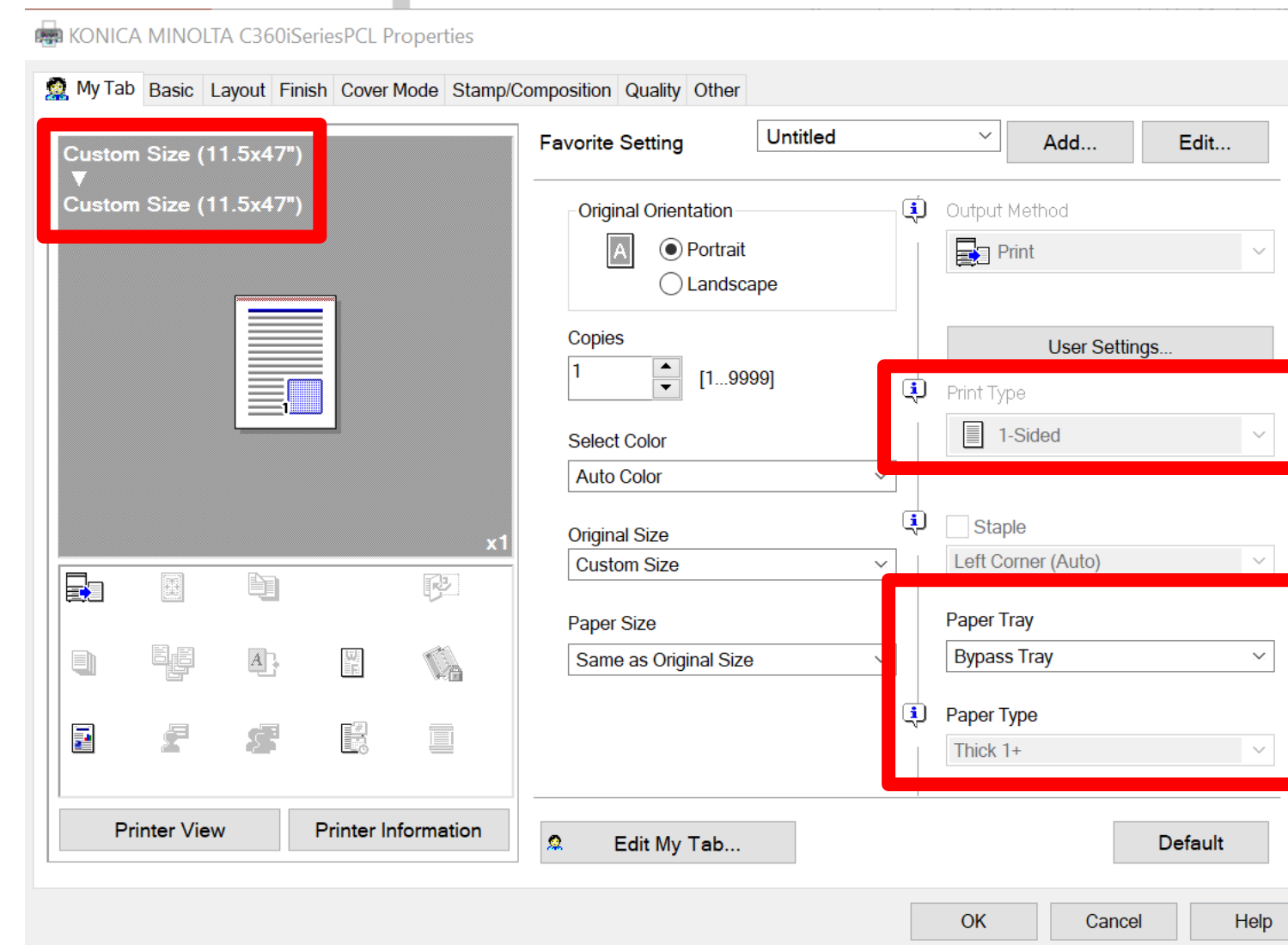
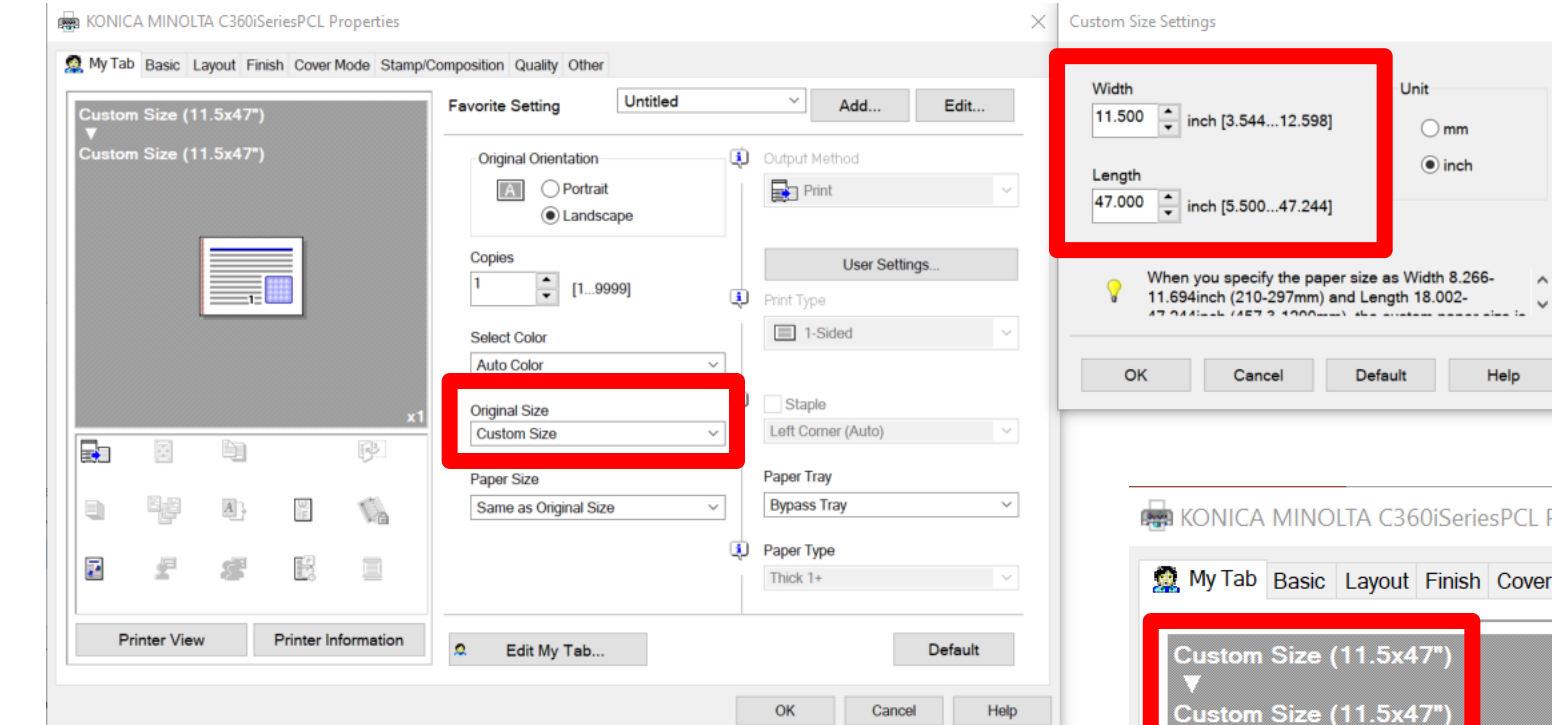
2

Banner printing must be turned on at the device prior to sending the print job



3

The Settings in the print driver need to be customized to the size of your paper (once you select the down arrow under ORIGINAL SIZE scroll to the bottom to create a custom size)
The maximum is 11.5" x 47"



4

When the job is complete it needs to be restricted so than normal printing can continue.