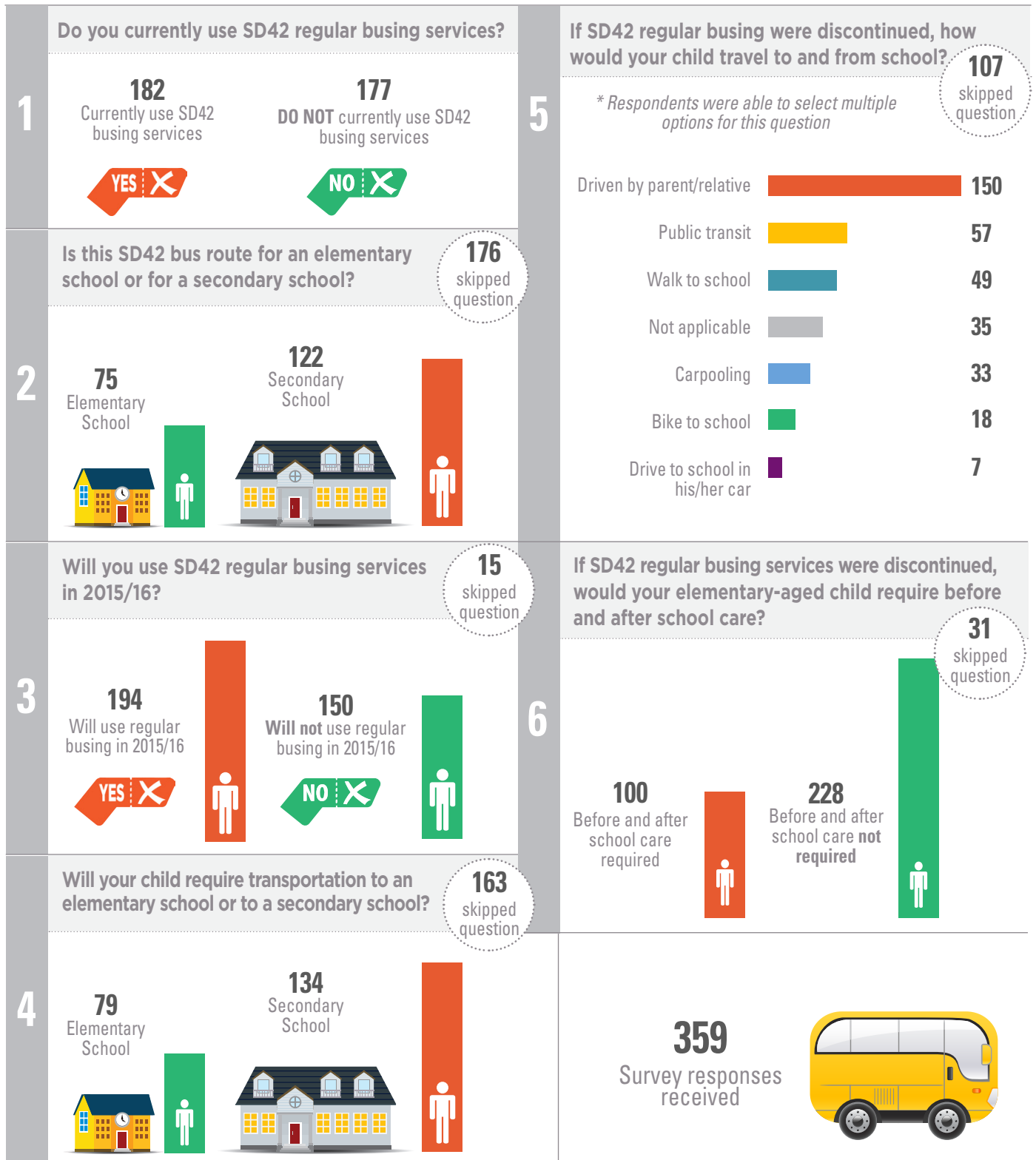


SD42 REGULAR BUSING TRANSPORTATION SURVEY RESULTS

Due to several cost pressures beyond its control and provincially mandated administrative savings, the Maple Ridge - Pitt Meadows School District (SD42) is facing an operating budget funding shortfall of \$1.68 million for 2015/16, followed by a budget funding shortfall of \$1.44 million for 2016/17. An online transportation survey was available from April 9 to April 24, 2015. This document offers a summary of the feedback collected.



SHARED CONCERNS

Communities with no public busing

- Some areas have no public busing at all; in others the service is inadequate
- Public buses come too early or too late
- Current residence was selected because a school bus serviced the area
- No reasonable alternative to SD42 regular busing



... there is such poor local transit out by 270th where we live. We have no actual bus stop, the kids would be expected to stand on the side of Dewdney and flag the bus down.

Student Safety

- Distances too great for children to walk (5 km – 20 km)
- Children too young to walk to school
- Roads unsafe for walking and/or bike riding: there is traffic, no proper walkways or sidewalks, wildlife
- Public transportation (where available) not as safe as school buses



My elementary school aged children live almost 2 miles from [their school] in an area with no public transportation, no street lights, no sidewalks and where bears and cougars are a common sight.

Driving children to/from school presents issues for some

- Both parents work fulltime and cannot drop off or pick up
- Single parents work fulltime and cannot drop off or pick up
- Taking time off to drive children to/from school would be a financial hardship
- School often in the opposite direction of work



We live 9 km from our catchment school, Whonnock. But that is in the opposite direction both my husband and I drive to work.

Catchment schools too far from home

- School boundaries changed and now our catchment school is too far
- Schools within walking distance are too full
- If regular busing is discontinued, students should be accommodated in a school closer to home or one on the way to work



I find it rather upsetting that my child cannot go to a school within walking distance of 7 blocks due to Albion being too full and him being forced to go to a school almost 30 blocks from home, Whonnock.

Hardship for families

- Some would be forced to work only part-time
- Some may have to get a different job or change careers entirely
- Some families may have to sell their house and move
- Some can't afford public transit costs or driving expenses
- Families are already paying a busing fee and local taxes to support transportation infrastructure in the community



I don't know because I start work at 7, and there are no transit buses that go to Webster's. This would be awful for my family as I am a single mom.