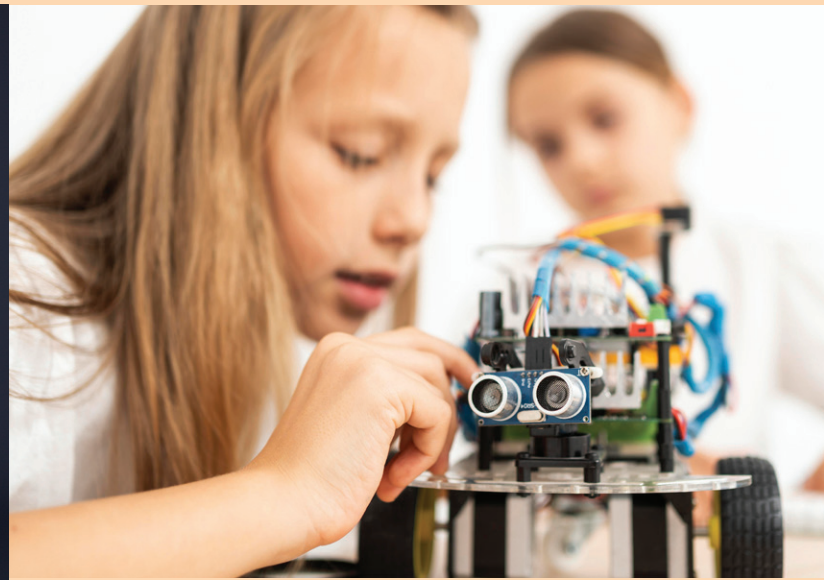


Pitt Meadows Elementary



REGISTRATION IS OPEN FROM NOVEMBER 26 AT NOON TO JANUARY 7 AT 11 P.M.

ROBOTICS (GRADES 2-7)

The Robotics Engineer I (R400) stream develops key robot navigation skills and mechanics. Students manage how robots react to the environment. After this stream, they are eligible to participate in robotics competitions.



Mondays
2:20 p.m. to 4:00 p.m.
Jan. 13 to March 3
Location: Library
\$185

SHOTOKAN KARATE (GRADES 1-7)

Shotokan is designed to teach self-defence, build self-confidence, stimulate a sense of well-being and provide a greater sense of self-awareness when faced with difficult situations. The program's primary goal is to teach respect for oneself and others, as well as basic self-defence techniques. There are two classes offered. *To register, contact Amy Shaw at 604.314.5852 or theninjalady@gmail.com*



Mondays & Wednesdays
2:30 p.m. to 3:30 p.m.
Jan. 13 to March 10



Tuesdays & Thursdays
2:30 p.m. to 3:30 p.m.
Jan. 14 to March 11

Students will go straight to the program at the bell.

All registrations are on a first come, first serve basis. Programs could be cancelled due to low registration.

To register, go to schooldistrict42.perfectmind.com.

For more info: Hannah Macdonald, (604) 837 2384 or hannah_macdonald@sd42.ca.