

Pitt Meadows Secondary School Replacement

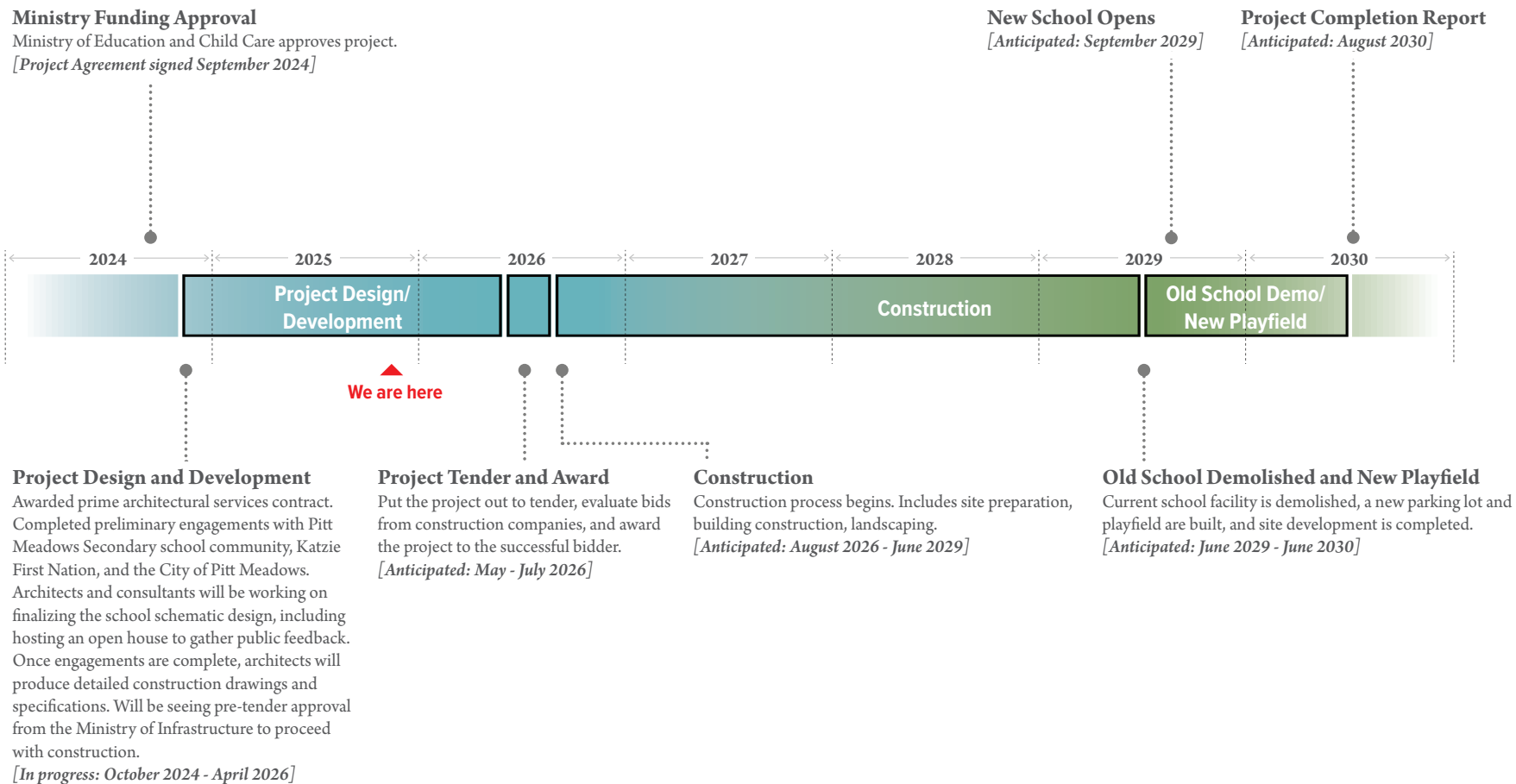
19438-116B AVENUE
PITT MEADOWS, BC

PUBLIC INFORMATION OPEN HOUSE
OCTOBER 29, 2025



public







KEY ENGAGEMENT PRINCIPLES

INCLUSIVITY

We will create an inclusive environment that welcomes diverse perspectives, values, and backgrounds.

ACTIVE LISTENING

We will practice active listening by attentively and respectfully hearing others without interruption or judgment.

CONSTRUCTIVE LANGUAGE

We will use language that is constructive, respectful, and focused on ideas rather than personal criticism.

SEEK UNDERSTANDING

Foster understanding by asking clarifying questions and avoiding assumptions or generalizations.

NON-VERBAL RESPECT

Demonstrate respect through open body language and non-verbal cues that convey attentiveness and openness.

EQUAL PARTICIPATION

Encourage equal participation by sharing speaking time and inviting input from all attendees, including those who may be less inclined to speak up.

IDEA-CENTRIC DISCUSSIONS

Engage in discussions that address ideas rather than attacking individuals, fostering a culture of respectful disagreement and diverse perspectives.

CONTINUOUS LEARNING

Embrace a culture of continuous learning and growth, remaining open to new insights and collaborative discussions that expand understanding.



ENGAGEMENT OBJECTIVES

- Communicate information clearly and effectively, including what was heard and how that informed decision making and the plans for the replacement of Pitt Meadows Secondary.
- Encourage meaningful input by providing information that builds awareness and understanding about planning and financial constraints.
- Understand the needs of the Pitt Meadows Secondary school community (families, students, staff, agencies), local First Nations, Métis community, urban Indigenous organizations, education partners, stakeholders, people with diverse lived experiences, the public, and the City of Pitt Meadows to ensure these are reflected in the plans.
- Generate input from Pitt Meadows Secondary school community (families, students, staff, agencies), local First Nations, Métis community, urban Indigenous organizations, education partners, stakeholders, with diverse lived experiences, the public, and the City of Pitt Meadows through a process that is easy, accessible and limits the barriers to participation.



DECISION MAKING

- Responsibility for the review and approval of final design recommendations rests with senior school district executives (superintendent, secretary-treasurer, director of facilities).
- The public, stakeholders, and partners will be advised through the public board meeting process of decisions made.

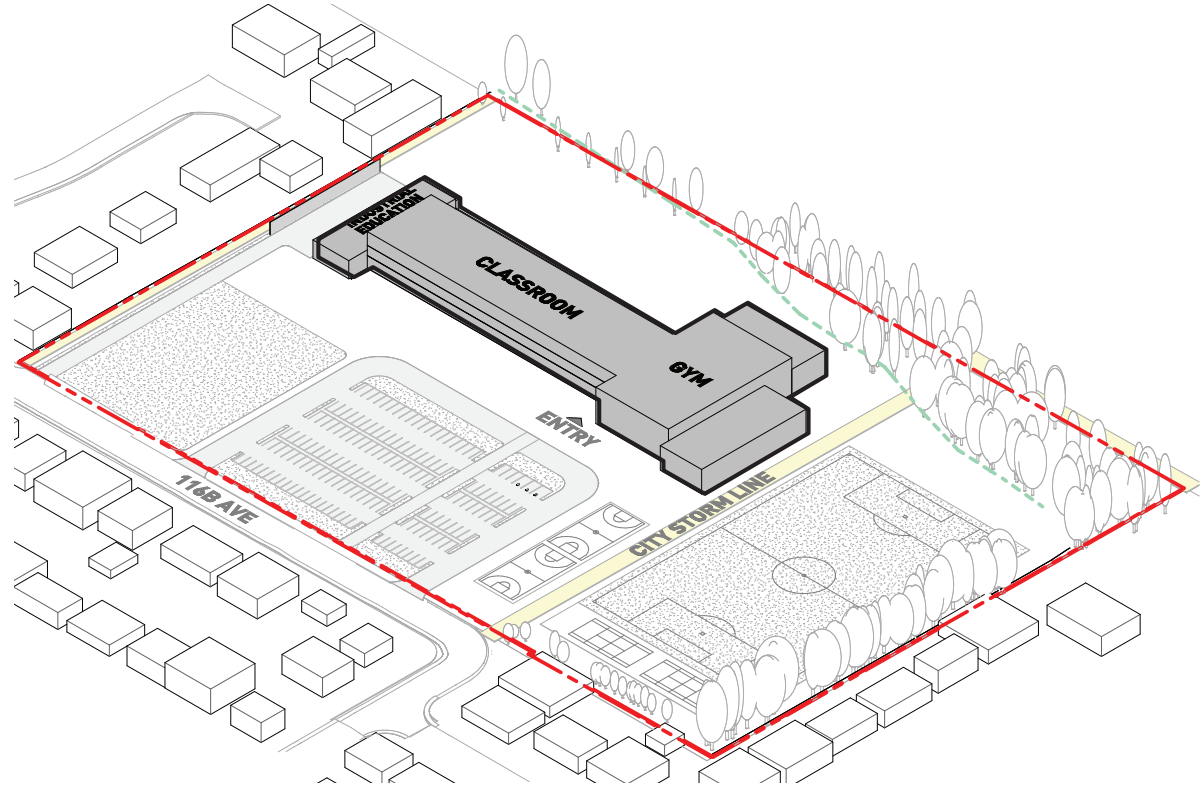


ENGAGEMENT GOAL

To work with the Pitt Meadows Secondary school community, local First Nations, Métis community, urban Indigenous organizations, education partners, stakeholders, people with diverse lived experiences, the public, and the City of Pitt Meadows to design a school that reflects educational, operational, and community needs now and into the future.

Project Information

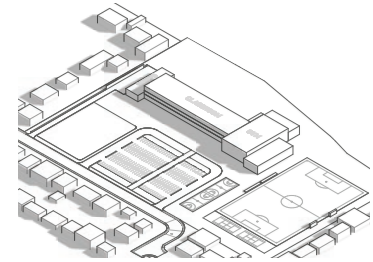
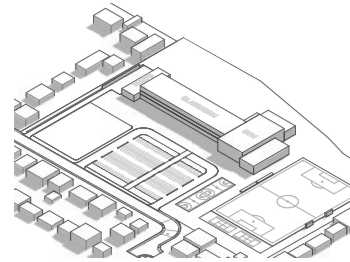
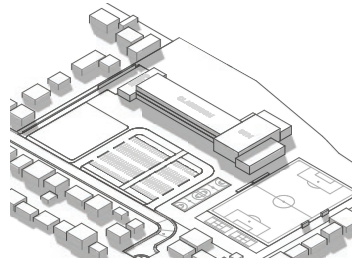
- **School capacity:** 1100 students (No change from current capacity).
- **Height:** Three storeys
- **Site area:** 5.5 Acres
- **Building area:** 11600 m²
- **Crime Prevention Through Environmental Design (CPTED)** standards will be applied throughout the school design process to promote a safe, secure, and supportive learning environment.
- The project design aligns with **ministry simplified design principles**, featuring efficient massing, functional layouts, balanced glazing, and cost-effective interior finishes.



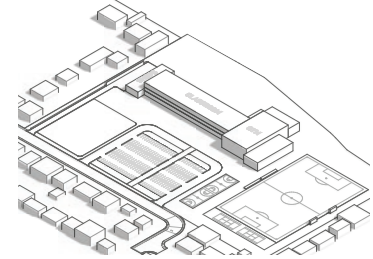
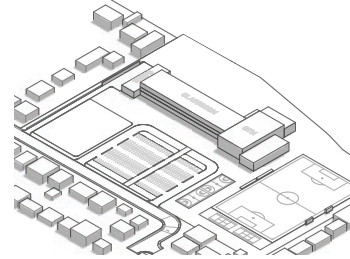
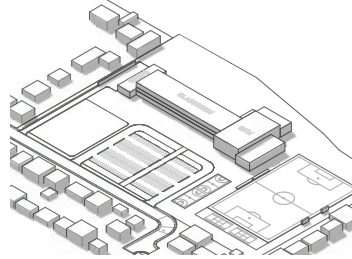
Benefits of Three-Storey Building Form

- Preserves outdoor space for sports fields, play areas, and community use.
- As demonstrated in the solar analysis diagrams on the right, the building is set back from property lines to minimize shadow impacts on neighbouring buildings.
- Reduces excavation noise and disruption during construction.
- Improves site efficiency with safer pedestrian routes and organized drop-off/pick-up zones.
- Meets current seismic and structural standards for public safety.
- A building height development variance permit application has been submitted to the city for review. If you have any questions or concerns, please reach out to City of Pitt Meadows.

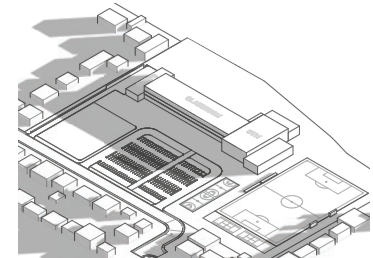
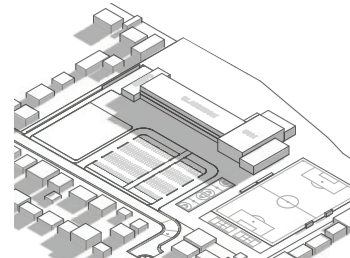
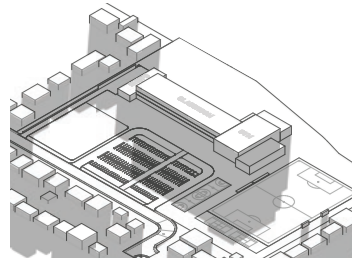
March 21 & September 21



June 21



December 21

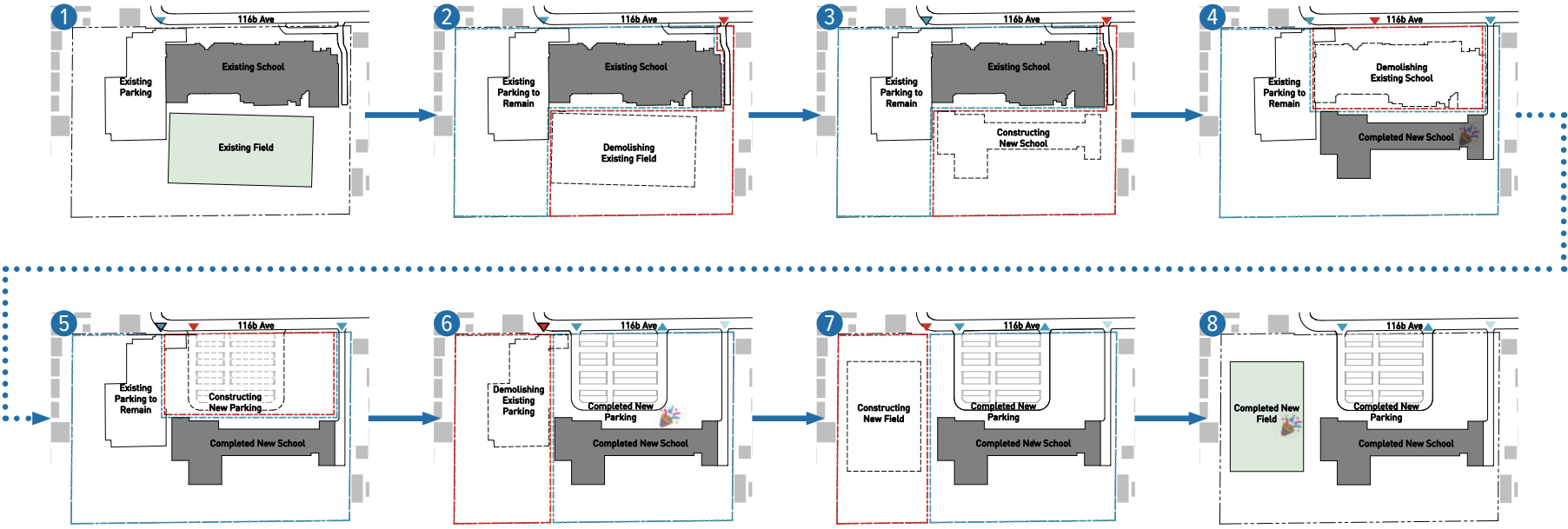


9 AM

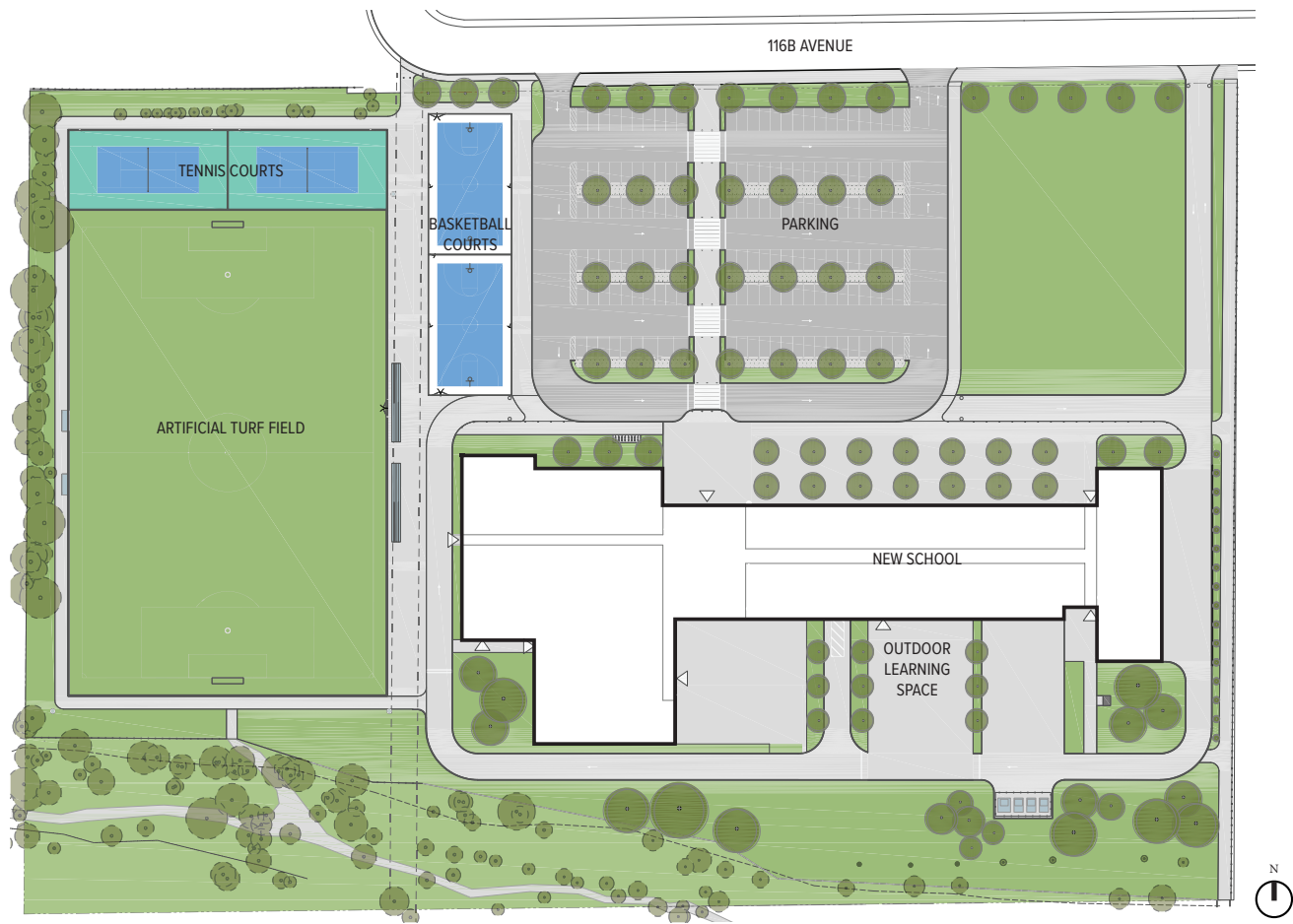
12 PM

3 PM

CONSTRUCTION PHASES

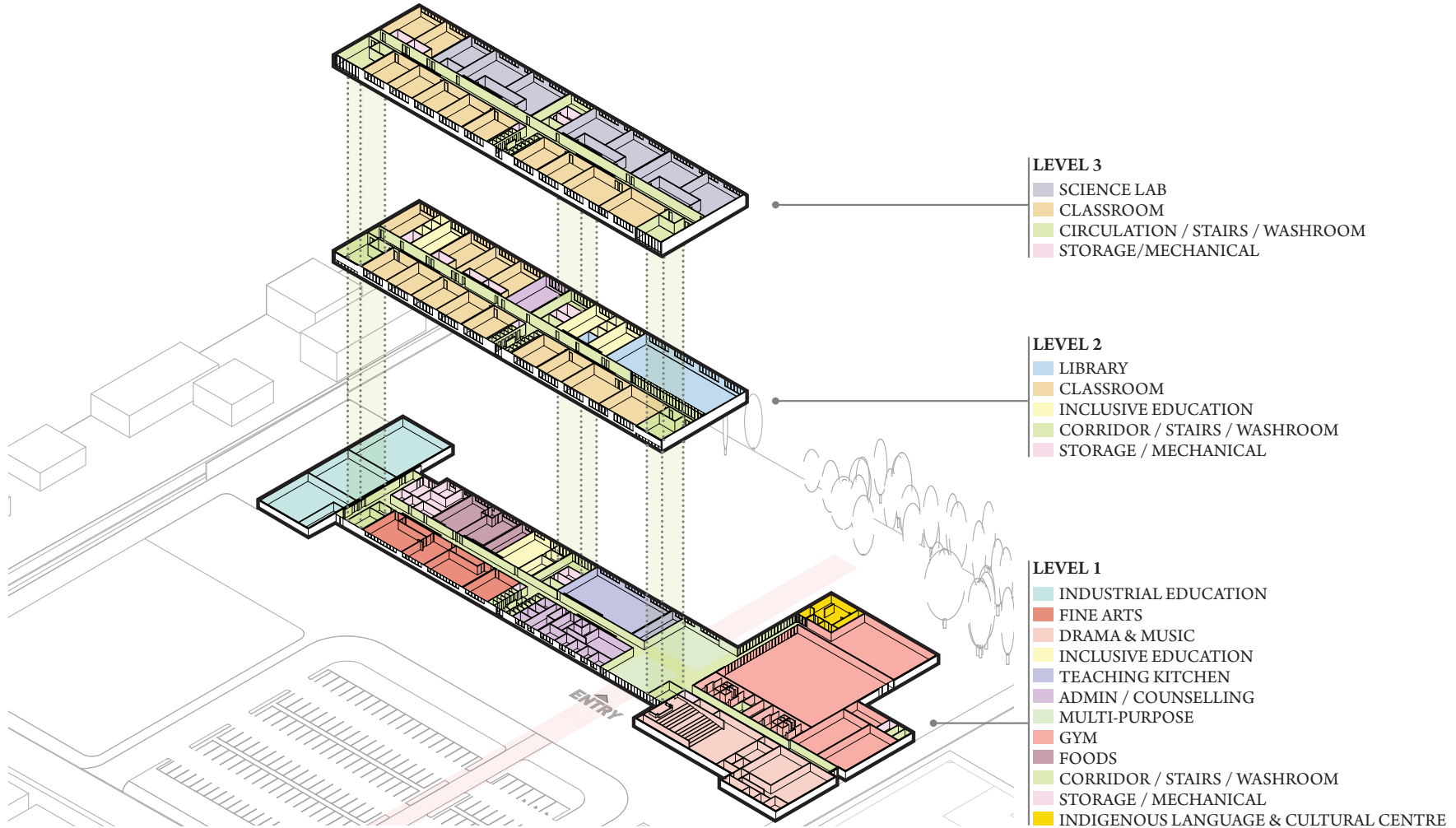


- School Zone
- Construction Zone
- Building
- Artificial Turf Field
- ▲ Construction Zone Entry/Exit
- ▲ Public School Zone Entry/Exit
- ▲ Restricted School Zone Entry/Exit

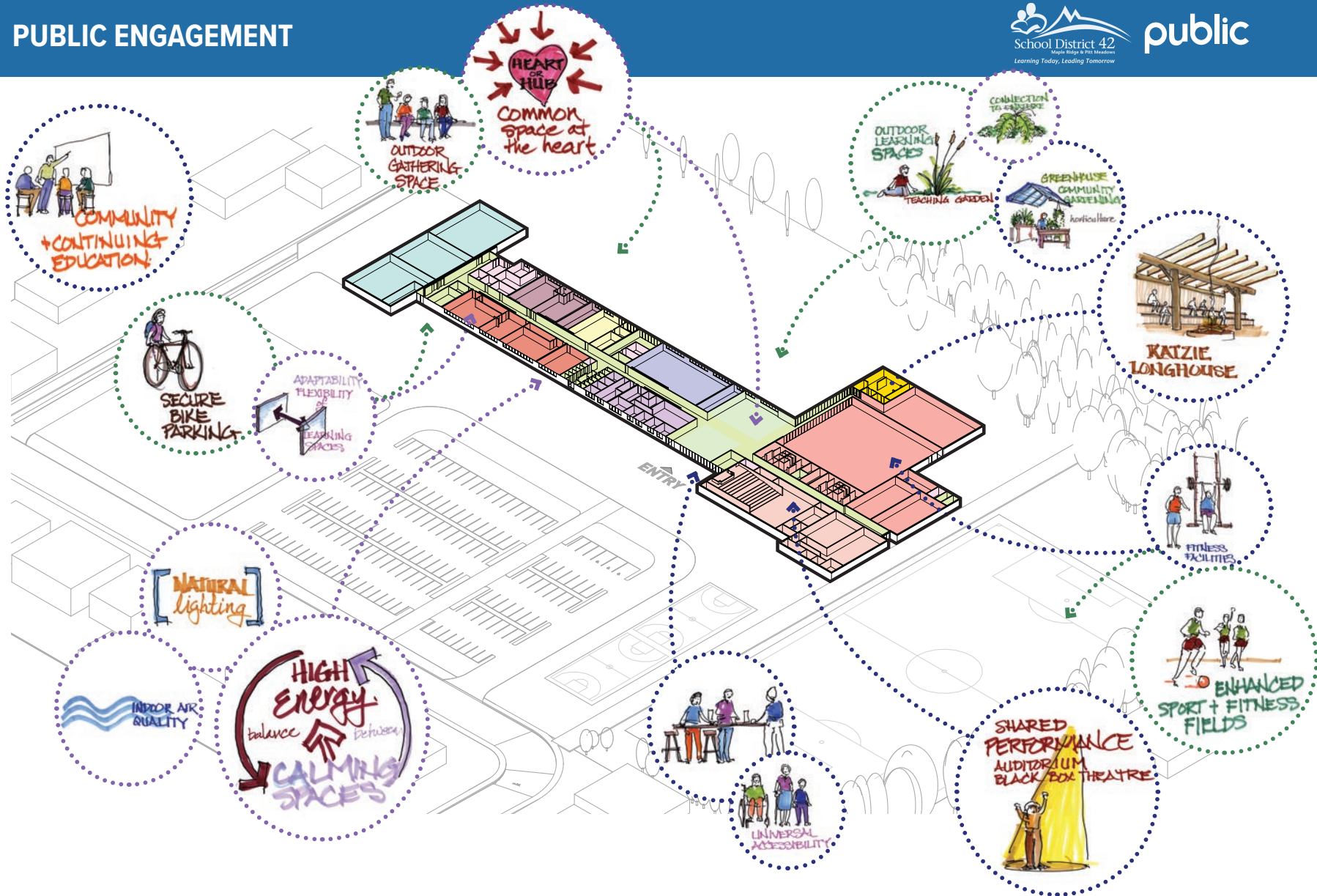


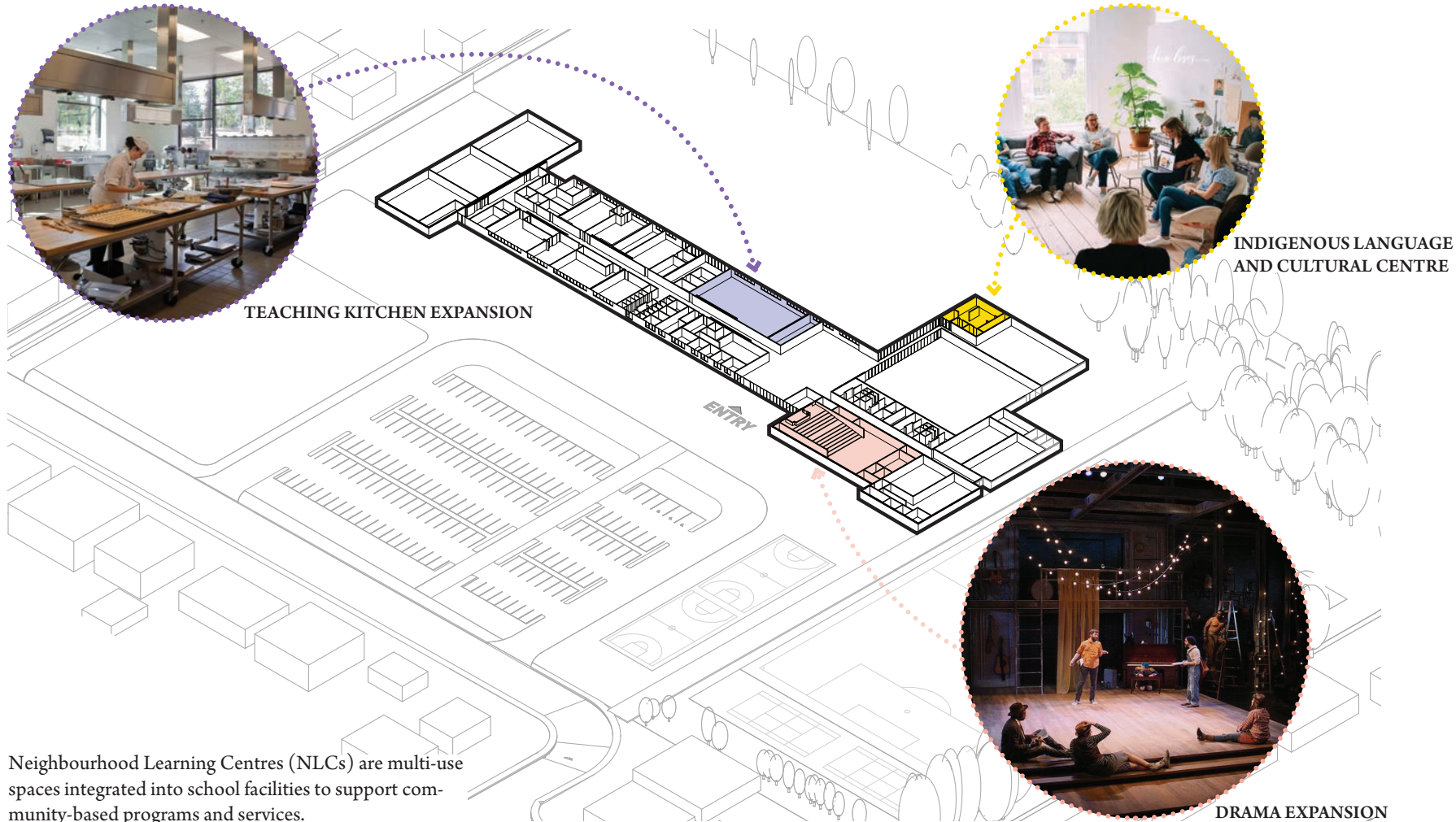
On-Site Native Tree Species
The plant species chosen are all native and adapted, with potential to focus on plants that have traditional uses and history.

LEARNING ENVIRONMENT OVERVIEW









Neighbourhood Learning Centres (NLCs) are multi-use spaces integrated into school facilities to support community-based programs and services.