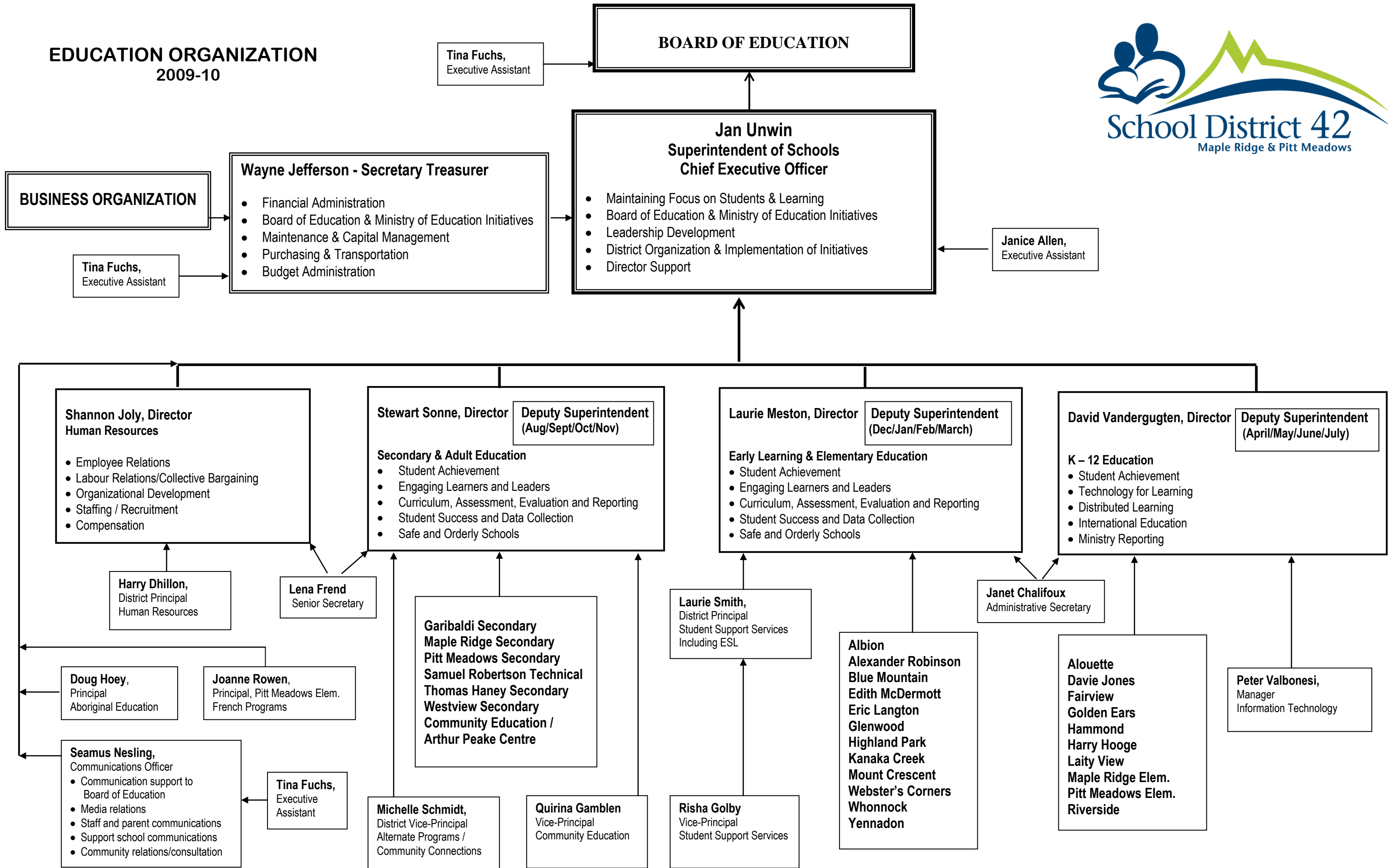


**EDUCATION ORGANIZATION
2009-10**



BUSINESS ORGANIZATION

Wayne Jefferson - Secretary Treasurer

- Financial Administration
- Board of Education & Ministry of Education Initiatives
- Maintenance & Capital Management
- Purchasing & Transportation
- Budget Administration

**Jan Unwin
Superintendent of Schools
Chief Executive Officer**

- Maintaining Focus on Students & Learning
- Board of Education & Ministry of Education Initiatives
- Leadership Development
- District Organization & Implementation of Initiatives
- Director Support

**Shannon Joly, Director
Human Resources**

- Employee Relations
- Labour Relations/Collective Bargaining
- Organizational Development
- Staffing / Recruitment
- Compensation

**Stewart Sonne, Director
Deputy Superintendent
(Aug/Sept/Oct/Nov)**

Secondary & Adult Education

- Student Achievement
- Engaging Learners and Leaders
- Curriculum, Assessment, Evaluation and Reporting
- Student Success and Data Collection
- Safe and Orderly Schools

**Laurie Meston, Director
Deputy Superintendent
(Dec/Jan/Feb/March)**

Early Learning & Elementary Education

- Student Achievement
- Engaging Learners and Leaders
- Curriculum, Assessment, Evaluation and Reporting
- Student Success and Data Collection
- Safe and Orderly Schools

**David Vandergugten, Director
Deputy Superintendent
(April/May/June/July)**

K - 12 Education

- Student Achievement
- Technology for Learning
- Distributed Learning
- International Education
- Ministry Reporting

**Doug Hoey,
Principal
Aboriginal Education**

**Joanne Rowen,
Principal, Pitt Meadows Elem.
French Programs**

**Seamus Nesling,
Communications Officer**

- Communication support to Board of Education
- Media relations
- Staff and parent communications
- Support school communications
- Community relations/consultation

**Tina Fuchs,
Executive Assistant**

**Michelle Schmidt,
District Vice-Principal
Alternate Programs /
Community Connections**

**Quirina Gamblen
Vice-Principal
Community Education**

**Risha Golby
Vice-Principal
Student Support Services**

**Albion
Alexander Robinson
Blue Mountain
Edith McDermott
Eric Langton
Glenwood
Highland Park
Kanaka Creek
Mount Crescent
Webster's Corners
Whonnock
Yennadon**

**Alouette
Davie Jones
Fairview
Golden Ears
Hammond
Harry Hooge
Laity View
Maple Ridge Elem.
Pitt Meadows Elem.
Riverside**

**Peter Valbonesi,
Manager
Information Technology**