



# Maple Ridge - Pitt Meadows Schools

Our vision is for every individual to feel valued and for all learners to reach their potential



- Seven locally elected trustees:
  - 5 from Maple Ridge
  - 2 from Pitt Meadows
- Elected for a 4-year term
- Current trustees' remuneration (Policy 2920)
  - Chairperson \$26,200
  - Vice-Chairperson \$24,700
  - Trustees \$23,200





- *Board Policy 2400: School Board Meeting Proceedings*
- Swearing in Ceremony **November 7, 2018**
- Trustee Orientation **November 8-20, 2018**
- Inaugural Meeting **November 21, 2018**
- One regular board meeting and one board work day per month on Wednesdays
- **Special board** meetings may be called
- **Closed board** meetings 1:00 pm to 4:30 pm
- **Public board** meetings 6:00 pm to 9:00 pm



Trustee participation in board committees:

- *Finance Committee of the Whole*
- *Budget Committee of the Whole*
- *Facilities Planning Committee of the Whole*
- *Roundtable with Partner Groups*
- *Board Policy Development Committee*

Trustee participation in other committees:

- *Internal* (e.g. education, aboriginal education, etc.)
- *External* (e.g. BCSTA, BCPSEA, DPAC, RMEF etc.)

## BOARD OF EDUCATION

- Govern the school district
- Formulate policy
- Define broad strategic directions
- Make decisions that are legally required
- Allocate resources to support strategic directions
- Monitor performance

### *Policy References:*

*2301 Role of the Board*

*3501 Role of the Superintendent of Schools*

*3202 Role of Secretary Treasurer*

## MANAGEMENT

- Day-to-day management of the school district
- Guide implementation of all board decisions
- Implement board policy
- Report results to the board
- Corporate executive officers of the board:
  - Superintendent
  - Secretary Treasurer

---

## TRUSTEE ROLE: Represent Citizens, Provide Support

---



15,000 Students

The diagram is an inverted pyramid divided into four horizontal sections. From top to bottom, the sections are: 15,000 Students (dark blue), 1,648 Staff (medium blue), 9 Senior Staff (light blue), and 7 Trustees (medium blue). The pyramid is outlined in white.

1,648 Staff

9 Senior Staff

7 Trustees

- **LOOK, LISTEN & LEARN**

School visits, pro-D, liaison to other groups, public consultation, round table, etc.

- **PLAN**

Three-year strategic plans, *Facility and Learning for Today and Tomorrow* plan, budgets. **Plan, Implement, Evaluate, Plan.**

- **GOVERN**

Set policy, establish priorities, monitor performance, hire and provide superintendent oversight

- **PROVIDE ADVOCACY**

BCSTA, communicate with Ministry and MLAs, educate, etc.

## VISION

Our vision is for every individual to feel valued and for all learners to reach their potential.



## MISSION

Our mission is to support all individuals in their development as successful learners, and as respectful, caring and responsible members of society.

# STRATEGIC PLAN



## VISION

Our vision is for every individual to feel valued and for all learners to reach their potential.



## MISSION

Our mission is to support all individuals in their development as successful learners, and as respectful, caring and responsible members of society.

## OUR VALUES

### Responsibility to all learners

We believe that all individuals in our school district community have the capacity to learn and that we are responsible for supporting their learning.

### Uniqueness of each individual

We value the uniqueness of each learner and embrace diverse ways of learning. We foster a variety of instructional methods and provide support to all learners so that they can realize their potential.

### Diverse learning opportunities

We value choices for all learners, equity of access to all programs, and a holistic approach to learning. We encourage learning opportunities beyond the classroom. We support life-long learning.

### Culture and community

We celebrate our many cultures and seek ways to appreciate and embrace diversity. We encourage interdependence and collaboration within the school district community. We value community partnerships.

### Personal and social responsibility

We believe that a sense of belonging is at the heart of our school district community and is fundamental to the success of all learners. We are committed to acting as responsible stewards within our community. We cultivate a culture of care within our school district community, and seek to develop the leadership and citizenship capacity of all learners.

### High expectations for success

We value the ability of all learners to set high expectations for themselves and to describe personal success. We believe success is measured through credible evidence of learning and rigorous self-assessment. We are committed to supporting all learners in achieving personal success.



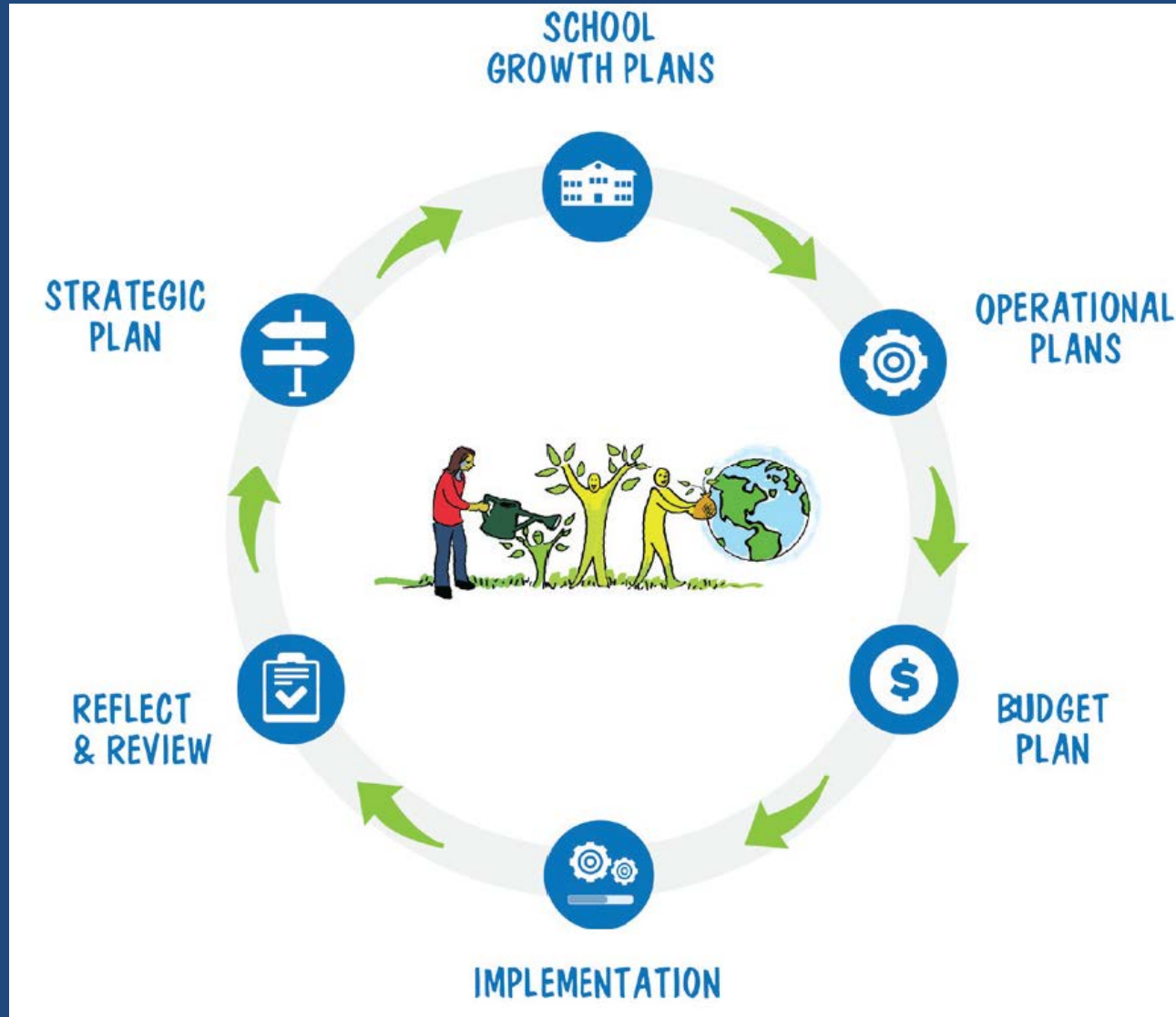
INCLUSIVE CULTURE OF CARE AND BELONGING WHERE THE WELL-BEING AND SUCCESS OF ALL LEARNERS IS SUPPORTED AND CELEBRATED.



INTENTIONAL SUPPORT FOR A GROWTH MINDSET, COLLABORATION, INTERDEPENDENCE, AND STAFF DEVELOPMENT.



FORWARD-THINKING, RESEARCH-INFORMED, EFFECTIVE, EFFICIENT, SUSTAINABLE, VALUE-BASED AND CONNECTED SCHOOL DISTRICT.





## MAPLE RIDGE – PITT MEADOWS SCHOOLS



- Making the most effective use of available facility resources given shifting demographics and changes in teaching and learning.
- Key recommendations included in Strategic Facilities Plan adopted October 2015:
  - Evaluate and make recommendations to the Board regarding new educational programming
  - Secure land for future schools
  - New school in South Albion
  - Adjust catchments to make best use of available resources
- The Strategic Facilities Plan will be updated in 2018/19





- Lighting upgrades: 17 completed, 3 underway
- HVAC upgrades: 11 completed, 6 underway
- Total investment to date \$3.50 M
- BC Hydro grants to date \$0.58 M
- MOE grants to date \$2.16 M
- Annual savings achieved
  - Electrical: 4,178,969 kWh
  - Natural Gas 7,074 GJ
  - Estimated financial savings: \$0.44M

## Provincial Budget 2018



	2017	2018	2019	2020
Public Schools Instruction	\$ 5,110	\$5,331		
Public Schools Administration	\$371	\$402		
Learning Improvement Fund	\$44	\$21		
TOTAL Public Schools	\$ 5,525	\$ 5,754	\$ 5,788	\$ 5,788
Enrolment	553,679	558,506	561,550	566,495

Historically, property taxes have funded approximately 32% of education costs with the balance being covered from other provincial revenue sources.

Funding is allocated to 60 school districts based on the Funding Allocation Formula

### Operating Grants inside “The Block”

- Multi-part formula primarily based on student enrolment:
  - 80% is allocated using a standard per student FTE amount (Basic Allocation)
  - Supplemental funding based on:
    - Unique student needs (includes Special Needs, ELL and Aboriginal students)
    - Unique district factors
    - Funding Protection / Enrolment decline

### Special Grants outside “The Block”

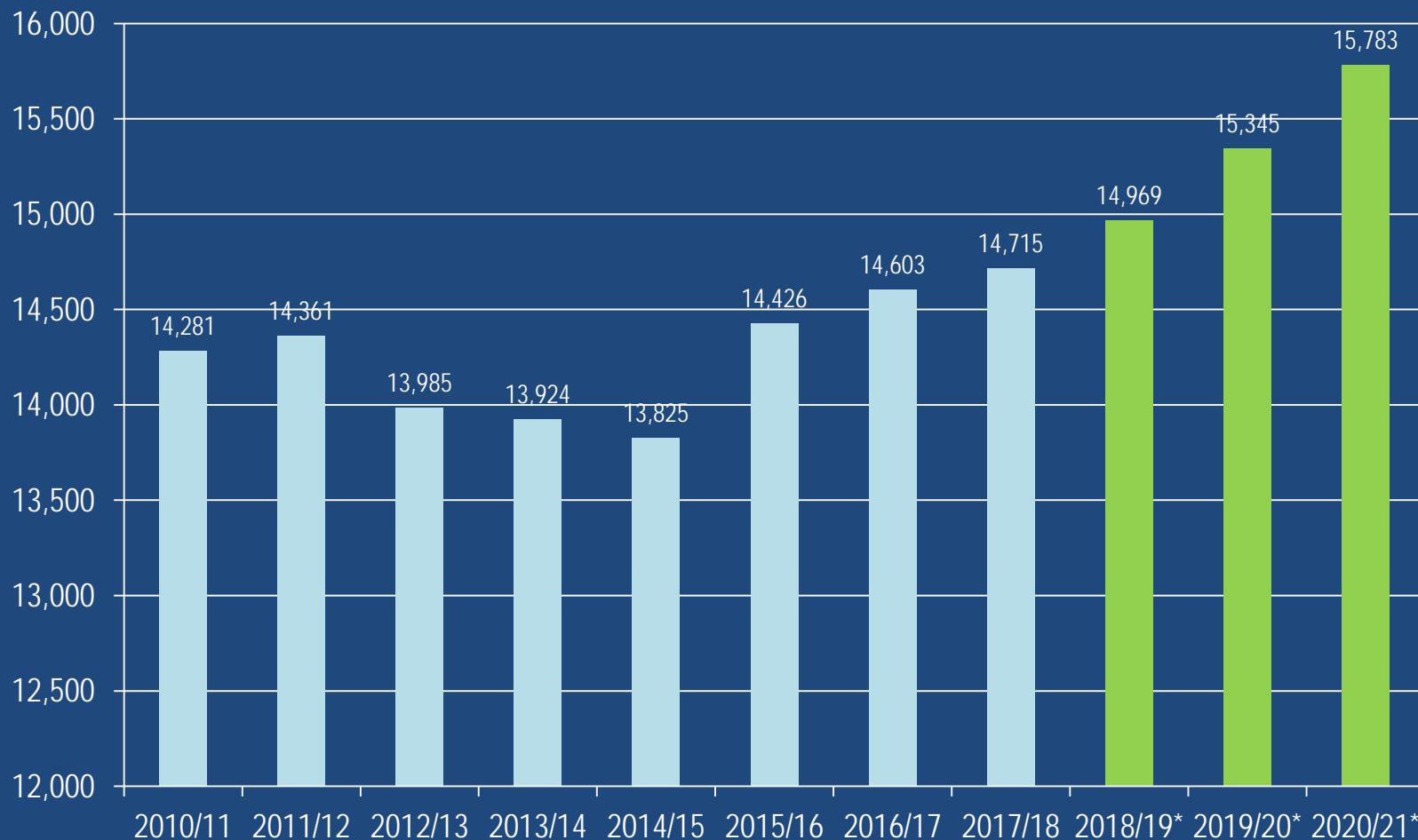
- Special Grants targeted at specific needs. For example:
  - Classroom Enhancement Fund
  - Learning Improvement Fund
  - CommunityLINK
  - Annual Facilities Grant





## ENROLMENT PROJECTIONS

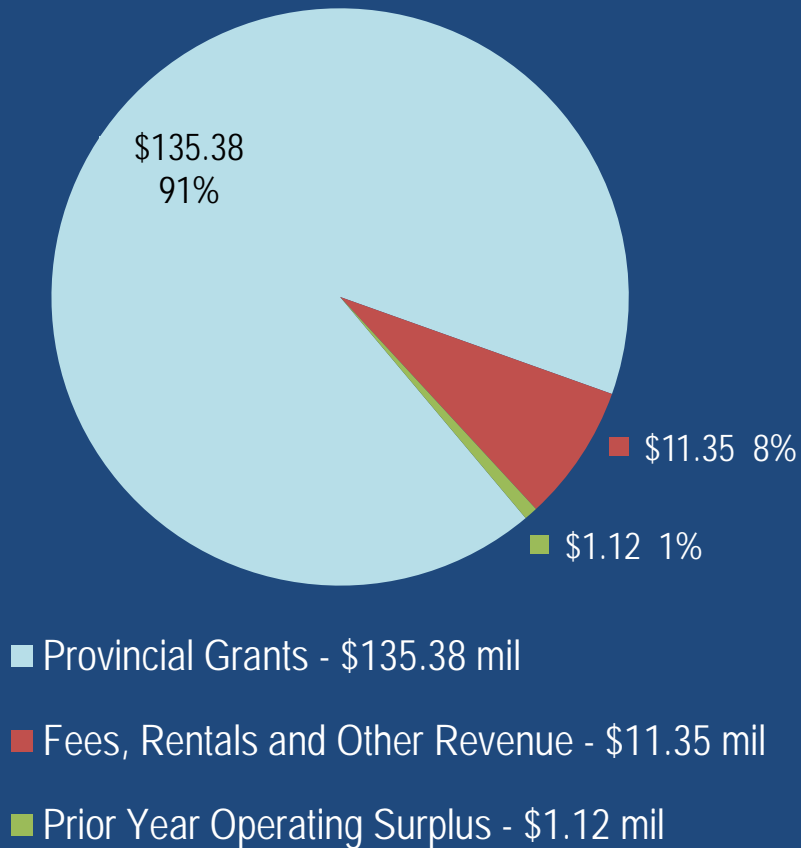
*Regular, Distributed Learning, Summer School & Alternate Funded FTE*



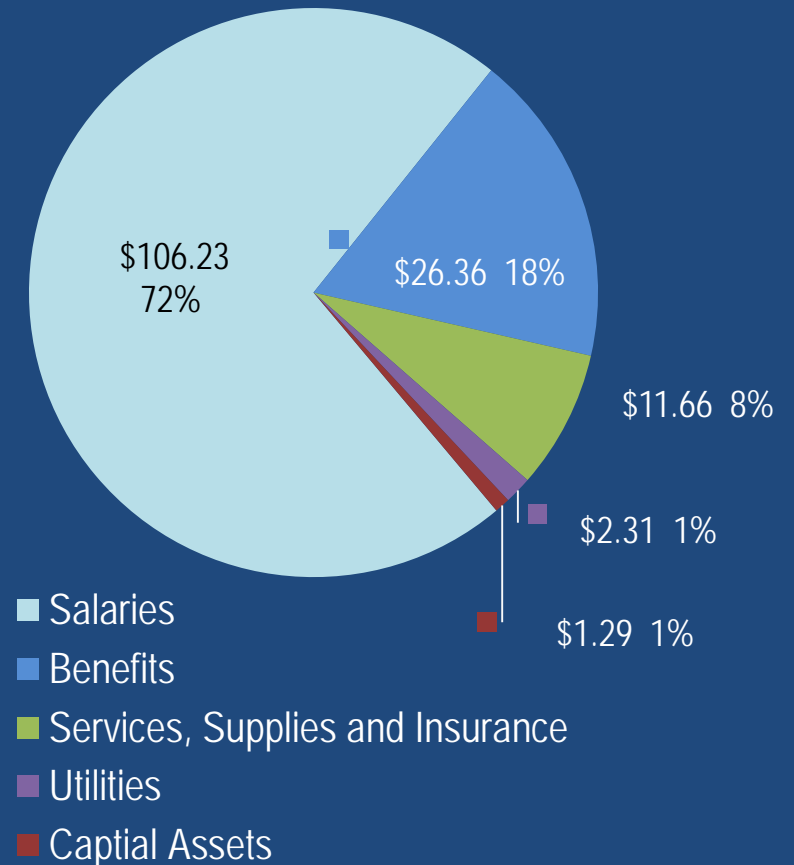
	Funding
March 14, 2018 Operating Grant	\$132,940,831
Student Transportation Fund	\$185,990
Learning Improvement Fund (LIF) – Support Staff	\$517,052
Classroom Enhancement Fund (CEF) – <i>Teachers Allocation</i>	\$9,377,450
Classroom Enhancement Fund (CEF) – <i>Overhead Allocation</i>	\$819,162
<b><i>TOTAL PROVINCIAL FUNDING 2018/19</i></b>	<b>\$143,840,485</b>



## Revenue \$147.85 M



## Expenditures



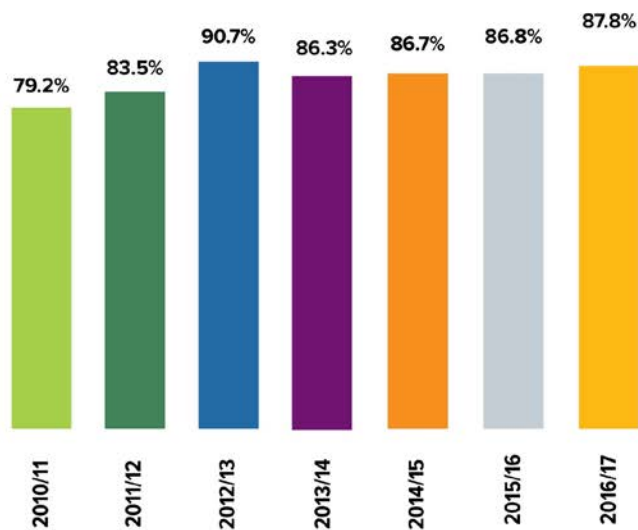


STUDENT SUCCESS





## 6 YEAR GRAD RATES SD42

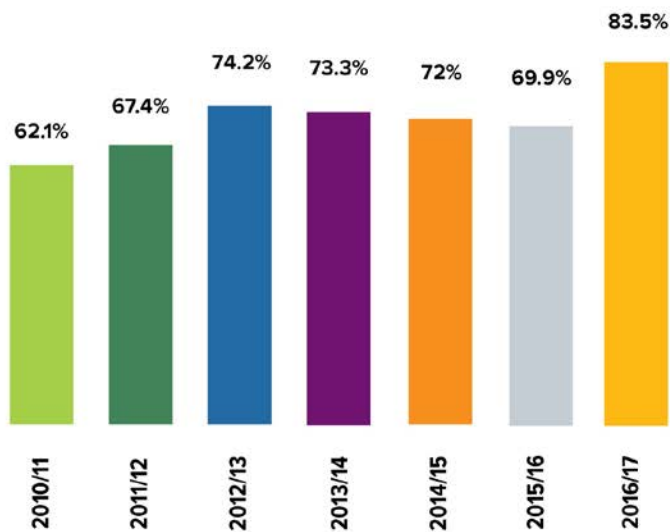


\* 2016/17 Provincial average: **84%**





### Aboriginal Education 6 YEAR GRAD RATES SD42



\* 2016/17 Provincial average: 65.9%



- School District: <http://www.sd42.ca/>
- BCSTA: <http://www.bcsta.org/>
- Ministry of Education: <https://www.bced.gov.bc.ca/>
- BCPSEA: <http://www.bcpsea.bc.ca/>
- School Law: <https://www2.gov.bc.ca/gov/content/education-training/administration/legislation-policy/manual-of-school-law>

Elections Questions or Concerns: [elections@sd42.ca](mailto:elections@sd42.ca)